

# WAGGA WAGGA SHOW



157th



**Amber Lawrence**  
**Lachie Gill**



**FRIDAY 8<sup>th</sup> &  
SATURDAY 9<sup>th</sup>  
SEPTEMBER**

Tickets: [waggashow.com.au](http://waggashow.com.au)

# MAJOR SPONSOR



# Table of Contents

MAJOR SPONSOR .....	1
OFFICE BEARERS .....	5
SPONSORS .....	9
PRESIDENTS WELCOME.....	10
RULES AND REGULATIONS .....	11
SECTION 1:.....	16
WAGGA WAGGA SHOW YOUNG WOMAN OF THE YEAR 2023 .....	16
YOUTH AND JUNIOR COMPETITIONS.....	19
SECTION 2: DAIRY GOATS.....	24
SECTION 3: CAKE DECORATING.....	31
SECTION 4: WOOL.....	39
SECTION 5: CATTLE (C).....	43
SECTION 6: SHEEP (S).....	49
SECTION 7: POULTRY .....	66
SECTION 8: FARM PRODUCE.....	75
SECTION 9: COUNTRY WOMEN'S ASSOCIATION.....	79
SECTION 10: GARDEN PRODUCE .....	82
SECTION 11: HORTICULTURE .....	86
SECTION 12: ARTS & CRAFTS .....	92
SECTION 13: PRE SCHOOL .....	103
SECTION 14: SCHOOL WORK .....	104
SECTION 15: CHAMPIONSHIP DOG SHOW .....	117
SECTION 16: PHOTOGRAPHY .....	118
SECTION 17: NEEDLEWORK & KNITTING.....	124
SECTION 18: FOOD AND COOKING.....	143
SECTION 19: BOER GOATS.....	155
EXHIBITOR'S ENTRY FORM.....	159

# PERFORMING AT THE WAGGA SHOW SATURDAY

## 9<sup>TH</sup> SEPTEMBER 2023



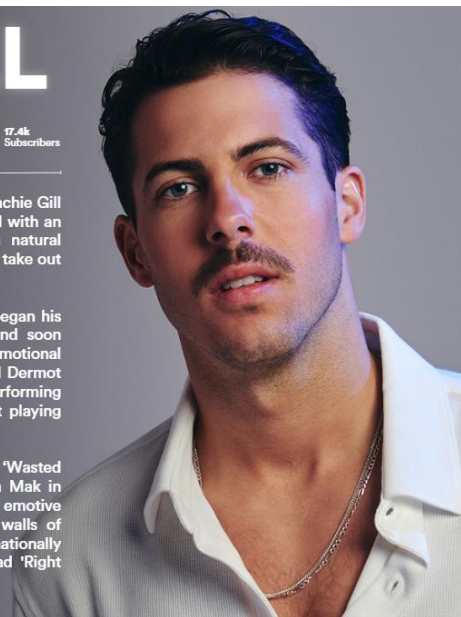
# LACHIE GILL



It was in 2022 that the music world received their introduction to Lachie Gill when he became a household name as winner of The Voice. Gifted with an arresting, mesmerising vocal ability, and an air of captivating natural charisma, Lachie impressed the music-lovers of Australia enough to take out the long-running show's 11th season under the guidance of Rita Ora.

A music fan from a young age, Lachie was only 13 when he first began his musical journey, being gifted a ukulele from his grandfather, and soon embracing performances while at school. Falling in love with emotional acoustic compositions, names like Ed Sheeran, Lewis Capaldi, and Dermot Kennedy soon began to influence his sound, and by 18, he was performing around coastal Victoria, juggling his passions between time spent playing AFL and studying to be a PE teacher.

Emerging from the victory of The Voice with the acclaimed single 'Wasted Time', Lachie teamed up with prolific producers Andy and Thom Mak in Avoca Beach to write for his next project. Harnessing his candid, emotive writing style, Lachie and the Mak brothers broke down these walls of vulnerability to craft the anthemic 'Sad Summer' which was added nationally to pop radio over Summer 2022/23, as well as the moving ballad 'Right People Wrong Time' featuring singer-songwriter Elaskia.



# OFFICE BEARERS

WAGGA WAGGA SHOW SOCIETY INC

PRESENTS

The 157th WAGGA WAGGA SHOW

## COMMITTEE FOR 2023

President	Mr Robert Hamilton
Senior Vice President	Mrs Jenny Hodges
Junior Vice President	Mr Andrew Forsyth
Junior Vice President	Mr Tim Roberts
Treasurer	Mr Brett Grant
Secretary/Manager	

## GENERAL COMMITTEE 2023

Andrew Forsyth	Brett Grant	John Graham	Robert Hamilton
Doug Millward	Bruce Ryan	Nevil Sweeney	Lance Rodd
Lois Cabot	LorraineHamilton	Jenny Hodges	Joan Rodd
Kylie Wessells	Jackie Millward	Rebecca Dean	Kate Webster
Ninoska Burchall	Teagan Colless	Gracie Goodyeay	Greg Pritchard
Neil Hilpern	Joann Fiddock	Isabella Batcheldor	Tim Roberts
Gail Ryan	Kate Murphy	Maggie Salisbury	Christine Brewer
Joann Fiddock	Janette Cabot		
Sarah Cudmore	Nicholas George		

## HONORARY LIFE MEMBERS

A G Bray	D Millward	L Rodd	A Johnston
P Baumer	J Schipp	P Whyte	J Millward
N G Cooke	B Ryan	R Weisback	F Mohr
J Dinnell	J Stewart	N Hamilton	J Rodd
J Graham	L Sweeten	M Hamilton	J Rodham
B Grant	R Sweeten	Y C Yeomans	L Sheather
B M Hamilton	O N Skeers	Jenny Hodges	L Weisback

## **LIFE MEMBERS**

Baumer P  
Bourne P  
Corbett TJ  
Dore B  
Hamilton B  
Henderson JC  
Hurst P  
Johnston G  
Keen EA  
McRae GR  
Millward DW & J  
Parnell J  
Robinson PF& KM  
Robinson K & H  
Rodham J  
Schipp D  
Sweetten L  
Taylor K  
Wishart D

Bedggood K  
Buick S  
Curran R & R  
Foord JT  
Hamilton R  
Hilpern N  
Hurst D  
Jolliffe G & K  
Kember W  
McCrea N  
Mohr P  
Powell P  
Roberson FT  
Robinson KW  
Rorrison JA  
Simpson JH  
Sweetten R  
Tunney P

Blake RJ  
Carrol G  
Dinnell J  
Grant BR  
Hansell M  
Horsley B  
Hurst I  
Judd D  
Lewington S  
McNeil J  
Munro NM  
Priest CF  
Roberts GK  
Rodham C  
Rorrison W  
Sly LD  
Stewart J  
Walmsley G



WAGGA WAGGA SHOW 2023

**PERFORMING AT THE WAGGA SHOW**

**FRIDAY 8<sup>TH</sup> SEPTEMBER 2023**



WAGGA WAGGA SHOW 2023

## SHOW TICKETING

### Ground Admission Price

#### Through the gate

Adults (16+) \$15.00

Aged Pensioners \$10.00

Youth (5 – 16) Years \$10.00

Children under 5 Free

#### Online

<https://www.123tix.com.au/events/38423/wagga-show>

Adult Save with our early bird discount pricing

\$13.00 + \*

Child (5-16) Save with our early bird discount pricing

\$9.00 + \*

Aged Pensioner Save with our early bird discount pricing

\$9.00 + \*

\* Plus 1.47% Credit Card payment fee - calculated at checkout



## WAGGA WAGGA SHOW 2023

# SPONSORS

## MAJOR SPONSOR

RIVERINA FRESH

## SPONSORS

R & V BERGIN PTY LTD

EQUILIBRIUM AUSTRALIA

MAGPIES NEST – RESTAURANT

HORSELAND WAGGA

RIVERINA CO-OP

RB SELLARS

TASCO PETROLEUM

MTC

FSD ELECTRICS

DAY SHIFT PRODUCTIONS

FOXTROT DANCE STUDIO

STAY UPRIGHT

RIVERINA FARMERS MARKET

MYERS WAGGA WAGGA

ELDERS

COBBLERS ROAD

DIAMONDS ON BAYLISS

SUPREME CHOICE HORSEWEAR

OFF THE TRACK NSW

RIVERINA SAFES AND LOCKS

KOHNKE'S OWN

MICHAEL ROSSLER ELECTRICAL

ROTARY CLUBS OF WAGGA

RIVER & WREN

LIME LEAF CATERING

WAGGA GREYHOUNDS

## PRESIDENTS WELCOME

On behalf of the Committee of the Wagga Wagga Show Society I would like to welcome all exhibitors & visitors to the 2023 Wagga Wagga Show. I would also like to congratulate and thank the hard-working committee & volunteers for making the 157th show possible.

Please take time to enjoy all the wonderful exhibits in our pavilion and throughout the whole showground, including the horses in the show ring at this years' show.

Without the generous support of our sponsors and the community we would not be able to continue each year.

We have continued to improve and beautify the showground; we are committed to improving the facilities and making the ground a greener space. We are currently replacing the Urana St amenities block. This new block will contain seven unisex toilets and four unisex showers as well as an accessible toilet & shower.

We were very excited to see so many of the community attend last years show. We can only hope that we two days of great weather this year. We are planning entertainment for all ages throughout both days of the show.

If you would like to be on our committee or be one of our many volunteers that help us put the show on every year, please feel free contact me through the show office. [admin@waggashow.com.au](mailto:admin@waggashow.com.au)

I trust that you will enjoy our 2023 programme and thank you again for your patronage and support.

Robert Hamilton

President



## WAGGA WAGGA SHOW 2023

# RULES AND REGULATIONS

### Terms and Times of Admission to the Show – Entry Fees

1. Members, Stewards and Judges - fees on production of their tickets or passes. On each day of the Show the public will be admitted at 8.30am. Vehicles containing supplies or exhibits will be admitted to the ground free up to 9.00am on each day, and must leave as soon as unloaded or required to do so by the Secretary or any of the Stewards. Commercial Exhibits must be in position prior to 9.30am each morning of the Show. Show entry fees must accompany entries for them to be accepted.
2. Dog Show Entries are required to be on Special Entry Forms and lodged with the Secretary on such day as the committee may decide.

### Rights of Entry

3. For members, under Rule 10, the Annual Subscription shall be Thirty Dollars (\$30.00) payable on the first day of July 2023.

### Exhibits

4. All exhibits shall at the date of entry be bona-fide property of Exhibitors, or of their principals.
- Exhibitors of Livestock will be required to furnish at date of entry particulars of age of the respective exhibits, also pedigree and breeders name when the same are known: if unknown, this fact to be stated, to the Secretary or Chief Steward.
5. If called upon by the Committee exhibitors must make a statutory declaration of the age of their exhibit or exhibits to conform to the conditions under which the prize or prizes for which they compete are offered; and the Committee may absolutely withhold payment of any prizes unless such declaration shall be made within one month of the date when the exhibitor shall be called upon to make such a declaration.
  6. The Committee reserves the right of refusing or cancelling any entry without giving any reason for doing so.
  7. All persons, who after entering exhibits (especially if stock) shall be unable, through some unforeseen circumstances to exhibit same, will be expected to give notice to the Secretary at least three days before the first day of the Show of their inability to exhibit.

## WAGGA WAGGA SHOW 2023

8. No exhibit will be allowed to compete for more than one prize and for Champion prize, except where otherwise specified.
9. In the case of Cattle the name, breed, age and section number **MUST** be given.
10. Sheep may be clothed during transit to the Show. Exhibitors or their attendants will be allowed to bring out and hold the sheep while being judged.
11. In case of Fine, Medium or Strong Combing Wool Sheep, the Judges have the right to direct removal of any exhibit that may in their opinion be entered in the wrong class, and shall request Stewards to place in its proper class.
12. No exhibits competing will be allowed to wear any ribbon, badge or mark until it has been finally judged. Only awards granted at the present show of the Wagga Wagga Society may be worn on the Showground under a penalty of \$15.00 for each offence.
13. Each ribbon, badge or mark awarded at the Show **MUST** be put on at once and worn at all parades or a penalty of \$15.00 will apply.
14. All exhibits must be in readiness to be judged as scheduled.
15. In the event of there being only one entry in any class, the judge, may, if he considers it worthy, award First Prize.

### **Dangerous and Diseased Exhibits**

16. Should the Committee for any reason suspect that any exhibitors or animals are either  
Diseased or Dangerous reserve the right to refuse admission thereof to the show-ground or to remove same from the ground at the expense of the Exhibitor.

### **Horse and Ring Events**

17. Any person objecting to an Award or Exhibit must enter a protest in writing fully setting out the grounds of such an objection to be handed to the Chief Steward of the Section with the necessary fee of \$75.00 and will be forfeited. No protest will be accepted after **RIBBONS** are awarded for the event concerned. A verbal notice of protest will be accepted by the Chief Steward, but the protest must be in writing within 20 minutes of the verbal notice. Any exhibitor or exhibitors displaying behaviour deemed unacceptable to the Wagga Wagga Show Society the Executive committee will ask them to leave the grounds.

## **WAGGA WAGGA SHOW 2023**

### **Responsibility of Society**

18. The Committee will give every possible facility to Exhibitors, and every care will be taken of Exhibits, but **NO** responsibility will be incurred by the Society.

### **District Radius**

19. In the Wagga District shall be interpreted to mean with in the radios of 50km of Wagga Wagga except where otherwise specified.

### **Freight on Exhibits**

20. All freight on exhibits sent to the Secretary/Manager **MUST**, be pre-paid and return freight paid otherwise they will not be received.

### **Sale of Show Stock**

21. Only stock that has been exhibited at the Show may be sold at auction at the Show.

### **Closing of Entries**

**Please note that entries in Sections close on the Date shown in this schedule before general Show Entries.**

22. This has been agreed by the Committee with the object of facilitating exhibits being received with Entry Ticket attached. Exhibitors are also requested to write their names on the covering of exhibits as it greatly assists Stewards when receiving and returning articles. Exhibitors are requested to **CAREFULLY READ THE CONDITIONS** at the head of each section.

23. No Gambling or Games of Chance will be allowed to be played on the showgrounds.

## **WAGGA WAGGA SHOW 2023**

24. No Collectors will be allowed on the ground excepting those authorised by the Committee to collect exhibit and any person infringing this regulation may be removed by any member of the Wagga Show Committee with the assistance of the police.
25. Amplification may be permitted at the discretion of and under the direction of the Stewards of respective sections.
- Infringement of Regulations**
26. Any person wilfully infringing or violating any of these Regulations shall forfeit all claims to any prizes he/she may have been awarded and shall be liable to be prohibited from exhibiting at any of the Society's Exhibitions.
27. Any person/persons that have not signed a waiver and refuses to do so when asked by a Steward will not be allowed to compete at the Wagga Wagga Show until such time the form has been signed.
28. Opening times for the Wagga Wagga Show shall be 9.00am to 9.00pm both days.

**Secretary/Manager Wagga Wagga Show Society Inc**

**P.O. Box 7256**

**Mt Austin**

**NSW 2650**

**Ph 02 69 252 180**

**Mobile 0427 252 180**

**Web: [www.waggashow.com.au](http://www.waggashow.com.au)**

**Email: [admin@waggashow.com.au](mailto:admin@waggashow.com.au)**



# Day Shift

PRODUCTIONS



# Riverina Safes & Locks

## WAGGA WAGGA SHOW 2023

# SECTION 1:

**Entries Close: 3 days prior to Judging Day**

# WAGGA WAGGA SHOW YOUNG WOMAN OF THE YEAR 2023

**HEAD STEWARD:** Kate Webster

**NOMINATIONS FORMS CAN BE OBTAINED FROM THE SHOW OFFICE &  
THE WAGGA WAGGA SHOW WEBSITE, [waggashow.com.au](http://waggashow.com.au)**

**ENTRIES CLOSE:** 3 days prior to Judging Day.

**INFORMATION NIGHT** on Monday, July 17th 2023.

**YOUNG WOMAN JUDGING:** TBA

**YOUNG WOMAN PRESENTATION:** on Friday, September 8<sup>th</sup>, 2023 at the grand opening of the 2023 Show.

Proudly sponsored by Myers, RB Sellars, Diamonds on Bayliss, Cobblers Road,

Nominations are invited from Young Ladies from the ages of 18 to 26 years (at May 1st 2024) to represent the Wagga Wagga Show Society in the 2024 The Land Sydney Royal Young Woman Competition. Prizes to be won 1st \$10,000; 2nd \$5000; courtesy of the Royal Agricultural Society of NSW and The Land (prizes are subject to change without notice).

Further information can be obtained from the Wagga Wagga Office on 0427 252 180. The competition plays a significant role in development of rural women and boasts incredible support from sponsors with over \$40 000 in cash and prizes. Courtesy of the Royal Agricultural Society of NSW, The Land Newspaper and Ag Show NSW.

## WAGGA WAGGA SHOW 2023

Wagga Wagga Show Young Woman 2023 Competition – Prizes are donated by a range of local businesses who kindly support this program locally. The Wagga Wagga Show Society wishes to thank the participating businesses for their generous support by way of Donations to the Competition.

# MYER

---

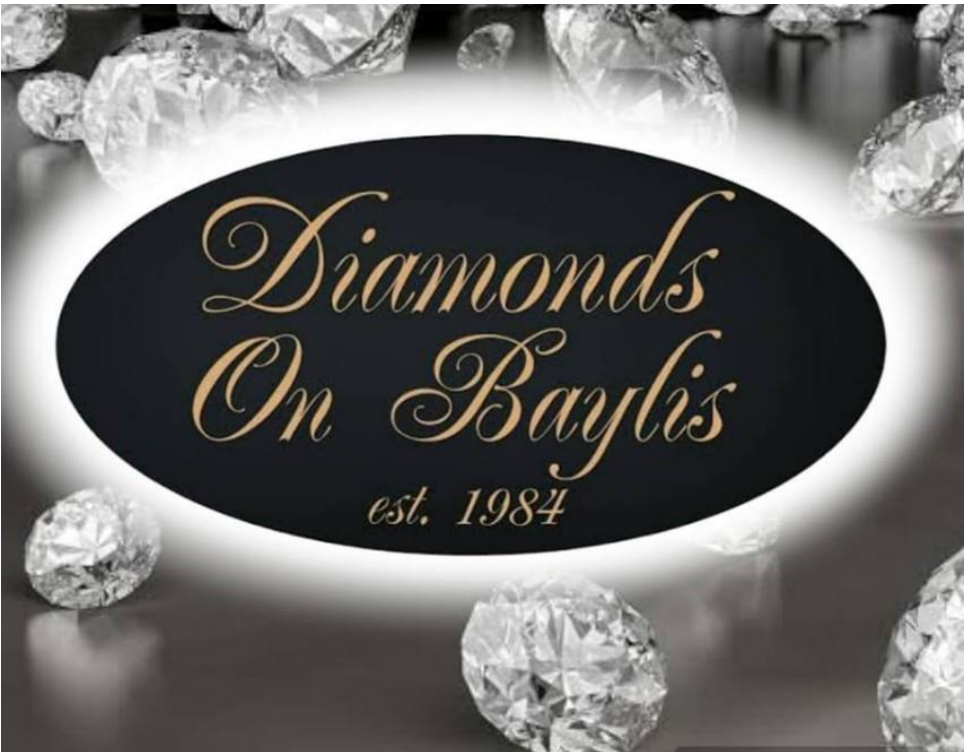
## MY STORE



WAGGA WAGGA SHOW 2023



**RB Sellars**



**WAGGA WAGGA SHOW 2023**

# **YOUTH AND JUNIOR COMPETITIONS**

## **WAGGA WAGGA SHOW JUNIOR YOUNG WOMAN OF THE YEAR 2023**

**HEAD STEWARD:** Kate Webster

**NOMINATIONS FORMS CAN BE OBTAINED FROM THE SHOW OFFICE &  
THE WAGGA WAGGA SHOW WEBSITE, [waggashow.com.au](http://waggashow.com.au)**

**ENTRIES CLOSE:** 3 days prior to Judging Day.

**INFORMATION NIGHT** on Monday, July 17th 2023.

**JUNIOR YOUNG WOMAN JUDGING:** TBA

**JUNIOR YOUNG WOMAN PRESENTATION:** on Friday, September 8<sup>th</sup>, 2023 at  
the grand opening of the 2023 Show.

Nominations are invited from Young Ladies from the ages of 16 to 18 years (attending high school) to participate in the 2023 Wagga Wagga Show Junior Young Woman of the Year.

Further information can be obtained from the Wagga Wagga Office on 0427 252 180. The competition plays a significant role in the development of rural women providing them with a range of unique personal and professional development opportunities.

Wagga Wagga Show Junior Young Woman 2023 Competition – Prizes are donated by a range of local businesses who kindly support this program locally. The Wagga Wagga Show Society wishes to thank the participating businesses for their generous support by way of Donations to the Competition.

## WAGGA WAGGA SHOW 2023

# WAGGA WAGGA SHOW RURAL ACHIEVER COMPETITION 2023

**HEAD STEWARD:** Kate Webster

**NOMINATIONS FORMS CAN BE OBTAINED FROM THE SHOW OFFICE & THE WAGGA WAGGA SHOW WEBSITE,** [waggashow.com.au](http://waggashow.com.au)

**ENTRIES CLOSE:** 3 days prior to Judging Day.

**INFORMATION NIGHT** on Monday, July 17th 2023.

**RURAL ACHIEVER JUDGING:** TBA

**RURAL ACHIEVER PRESENTATION:** on Friday, September 8<sup>th</sup>, 2023 at the grand opening of the 2023 Show.

Nominations are invited from young people from the ages of 18 to 29 years (at May 1st 2024) to represent the Wagga Wagga Show Society in the 2024 R.M.Williams RAS Rural Achiever Competition. Prizes to be won include a share in \$17,000 as well as a range of unique networking opportunities; courtesy of the Royal Agricultural Society of NSW and R.M.Williams (prizes are subject to change without notice).

Further information can be obtained from the Wagga Wagga Office on 0427 252 180. The competition aims to recognise future young leaders who are working hard to make a significant contribution to their local community and to rural Australia.

Wagga Wagga Show Rural Achiever 2023 Competition – Prizes are donated by a range of local businesses who kindly support this program locally. The Wagga Wagga Show Society wishes to thank the participating businesses for their generous support by way of Donations to the Competition.



**WAGGA WAGGA SHOW 2023**

**WAGGA WAGGA SHOW JUNIOR RURAL ACHIEVER  
COMPETITION 2023**

**HEAD STEWARD:** Kate Webster

**NOMINATIONS FORMS CAN BE OBTAINED FROM THE SHOW OFFICE &  
THE WAGGA WAGGA SHOW WEBSITE, [waggashow.com.au](http://waggashow.com.au)**

**ENTRIES CLOSE:** 3 days prior to Judging Day.

**INFORMATION NIGHT** on Monday, July 17th 2023.

**JUNIOR RURAL ACHIEVER JUDGING:** TBA

**JUNIOR RURAL ACHIEVER PRESENTATION:** on Friday, September 8<sup>th</sup>, 2023  
at the grand opening of the 2023 Show.

Nominations are invited from young men and women from the ages of 16 to 18 years (attending high school) to participate in the 2023 Wagga Wagga Show Junior Rural Achiever Competition.

Further information can be obtained from the Wagga Wagga Office on 0427 252 180. The competition aims to recognise future young leaders who are working hard to make a significant contribution to their local community and to rural Australia.

Wagga Wagga Show Junior Rural Ambassador 2023 Competition – Prizes are donated by a range of local businesses who kindly support this program locally. The Wagga Wagga Show Society wishes to thank the participating businesses for their generous support by way of Donations to the Competition.

**WAGGA WAGGA SHOW 2023**

**LITTLE MISS WAGGA WAGGA SHOW 2023**

**STEWARD:** Kate Webster

**ENTRIES:** made on the Saturday of the show at 11am (location TBA) - Entrants must be aged 4 to 15 years

**JUDGING:** Saturday September 9th 2023, commencing 11am - Presentation of winners will be held from 12pm onwards (location TBA).

The entrants will be judged on their presentation, personality and interest in the show.

**Proudly sponsored by**

**LITTLE MISTER WAGGA WAGGA SHOW**

**STEWARD:** Kate Webster

**ENTRIES:** made on the Saturday of the show at 11am (location TBA) - Entrants must be aged 4 to 15 years

**JUDGING:** Saturday September 9th 2023, commencing 11am - Presentation of winners will be held from 12pm onwards (location TBA).

The entrants will be judged on their presentation, personality and interest in the show.

**Proudly sponsored by**

## WAGGA WAGGA SHOW 2023

### Entry Form - Little Mister and Miss Wagga Wagga Show

Name:	Age (as of 9.9.23)	Favourite part of the show:

I ..... give permission for my son/daughter to participate in the 2023 Wagga Wagga Show Little Mister and Miss Competitions.

By signing this I understand that my child will be required to be in attendance for all components of the Little Mister and Miss competition to be considered for the title. I also understand that there will be photos taken of my child during their participation in the competition for future competition promotion and Wagga Wagga Show Society's promotional use.

Name (Printed):

Signed:

Date:

Please email a copy of this entry form to Kate Webster on [websterk095@gmail.com](mailto:websterk095@gmail.com) or bring it with you on the day of the competition.

WAGGA WAGGA SHOW 2023

## SECTION 2: DAIRY GOATS



**Entries Close: Friday 1<sup>st</sup> September 2023**

**ALL ENTRIES EMAILED TO MR LINDEN SLY as below**

**JUDGING SATURDAY 9<sup>th</sup> September 2023 9.30am**

**CHIEF STEWARD:** Linden Sly

Phone 02 69203357 Mobile 0428 160550

Email [lindensly860@hotmail.com](mailto:lindensly860@hotmail.com)

**ENTRY FEE: - \$1.50**

**PRIZE MONEY: - First \$4.00, Second \$2.00**

- Animals must be registered with the Dairy Goat Society of Australia.
- This section is run in conjunction with the rules and regulations of the DGSA NSW Branch Inc
- Age of animals to be calculated from birth date.
- AOV DAIRY BREED includes – Lamancha, Alpine, Sable & Nigerian Dwarf.
- Classes 13, 14, 15, 16, 32, 33, 34, & 35 are special classes. To be eligible in special classes all animals must be entered in their respective age classes.
- Entry form to contain name of goat, tattoo and birth date.
- All animals to be free of external & internal parasites and show no symptoms of disease.
- All declaration documents must accompany entries.

## WAGGA WAGGA SHOW 2023

### CLASS

1. **SAANEN DOE**, in milk, under 3 years.
2. **SAANEN DOE**, in milk, 3 years and over.
3. **TOGGENBURG DOE**, in milk, under 3 years.
4. **TOGGENBURG DOE**, in milk, 3 years and over.
5. **BRITISH ALPINE DOE**, in milk, under 3 years.
6. **BRITISH ALPINE DOE**, in milk, 3 years and over.
7. **ANGLO NUBIAN DOE**, in milk, under 3 years.
8. **ANGLO NUBIAN DOE**, in milk, 3 years and over.
9. **AUSTRALIAN MELAAN DOE**, in milk, any age.
10. **AUSTRALIAN BROWN DOE**, in milk, any age.
11. **A.O.V. DAIRY BREED**, in milk, any age
12. **DRY DOE**, any breed (in kid or to have kidded in the last 2 years).
13. **TYPE AND PRODUCTION** (24-hour test records etc.)
14. **TYPE AND PRODUCTION** (herd recording)
15. **BEST UDDERED DOE**, any breed. 1<sup>st</sup> lactation.
16. **BEST UDDERED DOE**, any breed. 2<sup>nd</sup> or more lactations.

**BEST UDDERED DOE OVERALL:** Ribbon.

Trophy donated by **International Animal Health Products.**

**RESERVE BEST UDDERED DOE OVERALL:** Ribbon.

**SENIOR CHAMPION DAIRY DOE:** Ribbon.

Trophy donated by **South West Stockfeeds.**

**RESERVE SENIOR CHAMPION DAIRY DOE:** Ribbon.

## WAGGA WAGGA SHOW 2023

### CLASS

17. **SAANEN MAIDEN DOE**, 1 to 2 years.
18. **TOGGENBURG MAIDEN DOE**, 1 to 2 years.
19. **BRITISH ALPINE MAIDEN DOE**, 1 to 2 years.
20. **ANGLO NUBIAN MAIDEN DOE**, 1 to 2 years.
21. **AUSTRALIAN MELAAAN MAIDEN DOE**, 1 to 2 years.
22. **AUSTRALIAN BROWN MAIDEN DOE**, 1 to 2 years.
23. **A.O.V. DAIRY BREED**, 1 to 2 years.

**JUNIOR CHAMPION DAIRY DOE:** Ribbon.

Trophy donated by **The NGR Team**.

**RESERVE JUNIOR CHAMPION DAIRY DOE:** Ribbon.

24. **SAANEN DOE KID**, under 12 months.
25. **TOGGENBURG DOE KID**, under 12 months.
26. **BRITISH ALPINE DOE KID**, under 12 months.
27. **ANGLO NUBIAN DOE KID**, under 12 months.
28. **AUSTRALIAN MELAAAN DOE KID**, under 12 months.
29. **AUSTRALIAN BROWN DOE KID**, under 12 months.
30. **A.O.V. DAIRY BREED**, under 12 months.

**CHAMPION DAIRY DOE KID:** Ribbon.



## WAGGA WAGGA SHOW 2023

Trophy donated by **The NGR Team.**

**RESERVE CHAMPION DAIRY DOE KID:** Ribbon.

31. **BUCK KID**, any breed, under 6 months.
32. **BUCK KID**, any breed, 6 to 12 months.
33. **BUCK**, any breed, 1 to 3 years.
34. **BUCK**, any breed, 3 years and over.

**CHAMPION DAIRY BUCK:** Ribbon.

Trophy donated by **The NGR Team.**

**RESERVE CHAMPION DAIRY BUCK:** Ribbon.

35. **DOE AND DAUGHTER**, same breed (same owner),
36. **DAMS PROGENY**, same breed (same owner), Two progeny of 1 doe
37. **SIRES PROGENY**, same breed (same owner), Two progeny of 1 buck
38. **BREEDERS GROUP**, same breed (same owner) 3 does to consist of milker, goating & kid



## **WAGGA WAGGA SHOW 2023**

**CHAMPION SAANEN DAIRY GOAT:** Ribbon.

Trophy donated by **International Animal Health Products.**

**CHAMPION TOGGENBURG DAIRY GOAT:** Ribbon.

Trophy donated by **International Animal Health Products.**

**CHAMPION BRITISH ALPINE DAIRY GOAT:** Ribbon.

Trophy donated by **International Animal Health Products.**

**CHAMPION ANGLO NUBIAN DAIRY GOAT:** Ribbon.

Trophy donated by **International Animal Health Products.**

**CHAMPION AUSTRALIAN MELAAN DAIRY GOAT:** Ribbon.

Trophy donated by **International Animal Health Products.**

**CHAMPION AUSTRALIAN BROWN DAIRY GOAT:** Ribbon.

Trophy donated by **International Animal Health Products.**

**CHAMPION A.O.V. DAIRY GOAT:** Ribbon.

Trophy donated by **International Animal Health Products.**

**GRAND CHAMPION DAIRY GOAT:** Ribbon.

Trophy donated by **Tasman Chemicals.**

**MOST SUCCESSFUL EXHIBITOR:** Ribbon.

**EXHIBITORS PRIZE:** Donated by **Tollendool Dairy Goat Stud.**

**WAGGA WAGGA SHOW 2023**

*TROPHIES DONATED BY:*

**THE NRG TEAM**

**INTERNATIONAL ANIMAL HEALTH PRODUCTS**

**TOLLENDOL DAIRY GOAT STUD**

**TASMAN CHEMICALS**

**SOUTH WEST STOCKFEEDS**

*RIBBONS DONATED BY*

**WAGGA SHOW SOCIETY**





## WAGGA WAGGA SHOW 2023

# SECTION 3: CAKE DECORATING

(GENERAL COOKING WILL BE FOUND IN SECTION 18)



**Entries Close: Wednesday 6<sup>th</sup> September 2023**

**CHIEF STEWARD MRS SUE BURKE**

**ENTRY FEE \$2.00 per entry including G.S.T**

**PRIZE MONEY FIRST \$15.00, SECOND \$7.50 THIRD \$5.00 for all adult classes.**

**HAND WORK ONLY, ALL WORK MUST BE THAT OF THE EXHIBITOR**

Ribbon, braid, raffia, tulle, wire, non-synthetic stamens, cotton thread, permitted. All edible foodstuffs e.g. piping gel, polenta, cachous and other sugar-based products may be used. Manufactured pillars allowed.

Exhibits need not be cake based; cake blocks may be used. All cakes must be covered in rolled plastic/fondant icing only. **NO butter cream.**

No limit on amount of entries per competitor in any sections.

No paper plates or plastic coverings on entries.

All boards must be suitably covered and must be solid enough to support the cake.

Manufactured ornaments e.g., rings, plastic bride & grooms, figurines, birds etc., are **NOT** permitted.

Only edible Gold or Silver paint, shimmer and glitter may be used.

## **WAGGA WAGGA SHOW 2023**

Height restrictions apply to all entries and must **not exceed 60cm**.

Board sizes must be adhered to. General limitations are 60cm square unless stated. (Your exhibit must fit into an area of 60 x 60 cm when measured along the front of the case).

**CLEATS** must be used on all boards that come into contact with any show cabinet surfaces. A tier is defined as two or more levels not necessary one above the other but linked by a common baseboard.

All exhibits in this section must be delivered to the Showground between 1.00pm – 4.00pm on **Wednesday 6<sup>th</sup> September 2023**. Judging will commence at 9.00am on **Thursday 7<sup>th</sup> September 2023**. Exhibits must only be placed into a position by the exhibitor at the direction of the steward.

Exhibits Prize monies may be collected between the hours of **9.30am and 11.00am on Sunday 10<sup>th</sup> September 2023**.

**NO RESPONSIBILITY TAKEN FOR ENTRIES LEFT IN THE HALL AFTER 11.00am  
ON SUNDAY 10<sup>th</sup> September 2023**

**NO SALE OF ANY EXHIBIT IN THESE SECTIONS IS PERMITTED IN THE HALL**

**An Encouragement Award Trophy (donated by Cake Decorators Guild of NSW INC) will be awarded to one successful entrant in the Wagga Wagga Show in any section.**

**A Champion Ribbon will be awarded for the Most Outstanding exhibit  
in the Open and Novice Section.**

Most Successful Ribbons will be awarded in Open and Novice Sections.

## **WAGGA WAGGA SHOW 2023**

No exhibitor shall remove entries from the Show Cases unless directed by a Steward.

### **OPEN SECTION**

1. **WEDDING CAKE** two or more tiers.
2. **MINI CAKE** must fit into a 16cm cube.
3. **SPECIAL OCCASION CAKE** single tier only. Must have piped inscription.
4. **NOVELTY CAKE** a hand carved single tier cake.
5. **SUGAR FLOWERS** presented with-in a 30cm cube.
6. **SUGAR ART PIECE** must be presented on board within a 30cm square.
7. **CELEBRATION CAKE** single tier, Competitors to be over 60 years of age.

### **NOVICE SECTION**

**Open to all competitors that have not won a first place in this section at this show  
or similar show.**

8. **WEDDING CAKE** two or more tiers.
9. **SPECIAL OCCASION CAKE** single tier. Must have piped inscription.
10. **NOVELTY CAKE** a hand carved single tier cake.
11. **MINI CAKE** must into a 16cm cube.
12. **SUGAR ART PIECE** must be presented on a board and fit in 30cm cube.
13. **WIRED SPRAY OF HAND MADE FLOWERS** presented with in 30cm cube.

# **WAGGA WAGGA SHOW 2023**

## **JUNIOR SECTION**

**PRIZE MONEY FIRST \$5.00, SECOND \$3.00 THIRD \$1.00**

### **5-8 YEARS**

- 14. DECORATED CAKE** to fit within 20cm cube.
- 15. PLAQUE / SUGAR ART PIECE** to fit within 25cm cube.

### **9-12 YEARS**

- 16. DECORATED CAKE** to fit within 25cm cube.
- 17. HAND MOULDED FIGURES** presented on a board to fit within 20cm square base.

### **13-16 YEARS**

- 18. DECORATED CAKE** to fit within 30cm cube.
- 19. HAND MOULDED FLOWERS AND FIGURES** presented on a board to fit within 30cm square base.

## **MOST SUCCESSFUL EXHIBITORS**

### **CLASSES 1 – 7 OPEN CLASSES**

**\$10.00 Prize donated by Cake Decorators Guild NSW Wagga Wagga.**

**Plus Most Successful Ribbon.**



## **WAGGA WAGGA SHOW 2023**

### **CLASSES 8 – 13 NOVICE CLASSES**

**\$10.00 Prize donated by Fairies R Us.**

**Plus most Successful Ribbon.**

### **ENCOURAGEMENT AWARD**

#### **CLASSES 1-13**

**Trophy donated by Cake Decorators Guild NSW INC**

**For exhibitor showing the most potential**

**All children's entries to receive special prizes**

**Donated by Cake Decorators Guild NSW Inc – Wagga Wagga Branch**

### **CHAMPION PRIZES**

#### **CLASSES 1 – 7 OPEN CLASSES**

**\$20.00 Prize donated by Cake Decorators Guild NSW Wagga Wagga Branch**

**Plus Champion Ribbon.**

#### **CLASSES 8 – 13 NOVICE CLASSES**

**\$20.00 Prize donated by Wagga Wagga Show Society Inc**

**Plus most Successful Ribbon.**

**WAGGA WAGGA SHOW 2023**

**THE WAGGA WAGGA SHOW SOCIETY**

**GRATEFULLY ACKNOWLEDGES THE FOLLOWING  
FOR**

**THEIR DONATIONS**

**CAKE DECORATORS GUILD OF NSW INC**

**CAKE DECORATORS GUILD WAGGA WAGGA**

**FAIRES R US**

*RIBBONS DONATED BY*

**WAGGA SHOW SOCIETY**



# WAGGA WAGGA SHOW 2023

## ADMINISTRATION OFFICES

**MILDURA**  
220 Tenth Street  
MILDURA VIC 3500  
P 03 5051 1700

## DEPOTS

**BENDIGO**  
45 Sandhurst Road  
Bendigo VIC 3550  
P 03 5446 3133

**BENALLA**  
34 Sydney Road  
Benalla VIC 3672  
P 03 5761 3400

**BROKEN HILL**  
5 Kanandah Road  
Broken Hill NSW 2880  
P 08 8088 1011

**BUNNALOO**  
RMB 520  
Bunnaloo NSW 2731  
P 03 5489 7241

**BALRANALD**  
81 Court Street  
Balranald NSW 2715  
P 03 5032 4469

**BORDERTOWN**  
23 Dukes Highway  
Bordertown SA 5268  
P 08 8752 2555

**COOTAMUNDRA**  
30 Hovell Street  
Cootamundra NSW 2590  
P 02 6971 0395

**LEETON**  
9-11 Brady Way  
Leeton NSW 2705  
P 04 0963 0028

**MILDURA**  
220 Tenth Street  
Mildura VIC 3500  
P 03 5022 1711

**MURRAY BRIDGE**  
112-114 Swanport Road  
Murray Bridge SA 5253  
P 08 8532 2134

**ALBURY**  
202 North Street  
ALBURY NSW 2640  
P 02 6042 0300

**NARACOORTE**  
241 Smith Street  
Naracoorte SA 5271  
P 08 8762 1422

**ROBINVALE**  
Moore Street  
Robinvale VIC 3549  
P 03 5026 3539

**RENMARK**  
52 Twenty First Street  
Renmark SA 5341  
P 08 8586 5966

**SERPENTINE**  
56 Peppercorn Way  
Serpentine VIC 3517  
P 03 5446 3133

**SHEPPARTON**  
17-26 McGill Street  
Shepparton VIC 3630  
P 03 5821 5460

**SWAN HILL**  
6-8 Jennings Road  
Swan Hill VIC 3585  
P 03 5032 4469

**URANA**  
48 Williams Street  
Urana NSW 2645  
P 02 6024 2488

**WODONGA**  
107 Bradford Street  
Wodonga VIC 3690  
P 02 6024 2488

**WAGGA WAGGA**  
18 Lewington Street  
Bomen NSW 2650  
P 02 6921 4710

Proud Partners of



Quality Fuels & Lubricants

# COMPANY PROFILE



WAGGA WAGGA SHOW 2023



ABN 97 002 450 839

**TUMBARUMBA**  
Timber Logging/Haulage  
Chip haulage  
Long Distance Haulage  
Ph: 02 6948 3567  
Fax: 02 6948 3143

**Buck Bergin, Managing Director 0428 296 959**



## SECTION 4: WOOL



**Entries Close: Friday 1<sup>st</sup> September 2023**

**CHIEF STEWARDS :** Mr A Forsyth Wagga Wagga

Mr Doug Millward Wagga Wagga

**ENTRY FEE \$2.00 per entry (unless otherwise stated).**

**PRIZE MONEY** FIRST \$15.00 SECOND \$10.00 unless otherwise stated.

Exhibits must be delivered to the showground in time for testing on Wednesday 6<sup>th</sup> September, 2023. If, in the opinion of the Judge, an exhibit is entered in the wrong class, he or she can place same in proper class.

All Fleeces in this Section must be properly skirted and will be tested by Riverina Wool Testers. Fleeces are to be judged on a commercial basis for their net value.

1. **MERINO FLEECE** (other than Rams), Strong - \$50.00 donated by NUTRIEN AG SOLUTIONS WAGGA
2. **MERINO FLEECE** (other than Rams) Medium - \$50.00 donated by NUTRIEN AG SOLUTIONS WAGGA
3. **MERINO FLEECE** (other than Rams) Fine - \$50.00 donated by NUTRIEN AG SOLUTIONS WAGGA
4. **MERINO FLEECE** (other than Rams) Super Fine - \$50.00 donated by NUTRIEN AG SOLUTIONS WAGGA
5. **MERINO RAM FLEECE**
6. **BORDER LEICESTER RAM FLEECE**
7. **BORDER LEICESTER EWE FLEECE**

## **WAGGA WAGGA SHOW 2023**

- 8. POLWARTH RAM FLEECE**
- 9. POLWARTH EWE FLEECE**
- 10. CORRIEDALE RAM FLEECE**
- 11. CORRIEDALE EWE FLEECE - \$25.00 donated by RIVERINA LIVESTOCK AGENTS**
- 12. BOND RAM FLEECE**
- 13. BOND EWE FLEECE**
- 14. COMEBACK FLEECE - \$25.00 donated by RIVERINA LIVESTOCK AGENTS**
- 15. CROSSBRED FLEECE FINE - \$25.00 donated by NUTRIEN AG SOLUTIONS WAGGA**
- 16. CROSSBRED FLEECE STRONG- \$25.00 donated by NUTRIEN AG SOLUTIONS WAGGA**
- 17. MERINO LAMB'S WOOL not less than 1kg**
- 18. LAMB'S WOOL other than Merino not less than 1kg**

### **MERINO FLEECE & CROSSBRED FLEECE**

**Sponsorship by Nutrien Ag Solutions Wagga Wagga**

**A TROPHY AND SASH WILL BE AWARDED FOR  
THE BEST FLEECE (OTHER THAN MERINO)**

**CHAMPION MERINO FLEECE IN SHOW**

**GRAND CHAMPION FLEECE IN SHOW**

**WAGGA WAGGA SHOW 2023**

**SECTION 4 WOOL**

*SPONSORED BY*

**RIVERINA WOOL TESTERS**

**NUTRIEN AG SOLUTIONS**

**ELDERS**

**RIVERINA LIVESTOCK AGENTS**

*RIBBONS DONATED BY*

**WAGGA SHOW SOCIETY**



WAGGA WAGGA SHOW 2023



**Nutrien**  
Ag Solutions®





## WAGGA WAGGA SHOW 2023

# SECTION 5: CATTLE (C)



**Entries Close: Friday 25<sup>th</sup> August 2023**

Late entries are subject to acceptance by the Chief Steward

### HOW TO ENTER

Complete an entry form for both livestock and handlers and other required documents listed, make payment by EFTPOS or can pay by cash on the day and send the entry form and proof/ choice of payment to the Chief Steward [bella.batcheldor@gmail.com](mailto:bella.batcheldor@gmail.com) AND [admin@waggashow.com.au](mailto:admin@waggashow.com.au) INCLUDING Section Name.

Cattle are to be on the Showground by 8:30 am Friday 8th of September if showing on the Friday or 8 am Saturday 9th of September if only showing on Saturday and do not want to come on Friday (unless arranged prior).

No movement of vehicles will be permitted after 9 am unless under Show Society supervision and direction. Can exit on Saturday 9th in the afternoon between (INSERT TIMES) and Sunday 10th from any time.

**All Junior classes for both sheep and cattle will be held on Friday 8th September 2023. All Cattle and sheep classes will be held Saturday 9th September 2023.**

**ENTRY FEE      \$5 – per class**  
**\$3 – Junior Judging**  
**\$3 – Junior Parading**

### ENVIRONMENTAL LEVY (covers removal and disposal of bedding)

1 to 3 head – cost \$10  
4 to 6 head – cost \$20  
7 to 9 head – cost \$30  
Over 10 head – cost \$40

## **WAGGA WAGGA SHOW 2023**

### **PRIZES**

Beef Classes – 1st, 2nd & 3rd – ribbon

Junior Classes – 1st, 2nd, 3rd, 4th & 5th - ribbon

Champion - ribbon

Reserve Champion - ribbon

Grand Champion - ribbon

Supreme - ribbon

**(prize money to be allocated According to entries)**

### **CHIEF STEWARD**

Isabella Batcheldor-Weule Mobile 0431 384 910

### **STEWARDS**

TBA

### **JUDGE**

TBA

Judging will commence around 12:30 - 1 pm following the sheep and a lunch break on Friday 8th September. Judging time will be confirmed for Saturday 9th September

### **WAIVERS/DECLARATIONS**

- Exhibitor Indemnity & Waiver Form
- National Cattle Health Declaration
- Pestivirus negative result
- National Vendor Declaration

Agricultural Show societies require exhibitors to complete a declaration on the health status of animals participating in shows as part of showground biosecurity. You can find templates here for completion:

<https://www.farmbiosecurity.com.au/toolkit/declarations-and-statements/>

## **WAGGA WAGGA SHOW 2023**

### **CONDITIONS OF ENTRY**

- Wagga shows PIC No.
- All exhibitors will be given wristbands
- All movement of vehicles will be coordinated by the Chief Steward or under Show Society supervision and direction
- Due to other activity around the cattle/ sheep section, spotters must be used when vehicles are leaving the cattle/ sheep section.
- The Wagga Wagga Show Society will supply straw for bedding
- Exhibitors will be required to supply their own fodder
- All cattle are to be registered with their respective Breed Societies & to be tagged with NLIS
- Cattle to be supported by National Cattle Health Declaration and BVDV-free evidence
- Any animals infected with warts or ringworm will be deemed ineligible for exhibition at the show
- Ages of cattle to be calculated as of 7th of September 2023
- Cattle to be tied with suitable neck collars and halters
- All bulls over 12 months of age are to have nose rings
- All females must be led with a nose clip
- Exhibitors are strongly advised to ensure that they and their animals are covered by Public Liability Insurance.
- All electrical appliances, e.g. extension cords and blowers must be tagged by a competent person.

## WAGGA WAGGA SHOW 2023

### JUNIOR CLASSES- Friday 8th September- 1 pm

#### PARADERS

**JC1** Pee wee: 5 yrs and under 9 yrs

**JC2** Junior: 9 yrs and under 12 yrs

**JC3** Sub-intermediate: 12yrs to under 15 yrs B21

**JC4** Intermediate: 15yrs to under 18yrs

**JC5** Senior: 18 yrs and under 25 years

**Champion Parader (JC1,JC2, JC3, JC4, JC5)**

**Reserve Champion Parader**

#### JUNIOR JUDGING

**JC6** Pee wee: 5 yrs and under 9 yrs

**JC7** Junior: 9 yrs and under 12 yrs

**JC8** Sub-intermediate: 12 yrs to under 15 yrs B21

**JC9** Intermediate: 15 yrs to under 18 yrs

**JC10** Senior: 18 yrs and under 25 years

**Champion Junior Judge (JC6, JC7, JC8, JC9, JC10)**

**Reserve Champion Judge**

### CATTLE CLASSES - Saturday 9th September

*All cattle classes will be judged in two sections*

*A. British breeds (Angus, Hereford, Murray greys etc.)*

*B. European breeds (limousin, Charolais etc.)*

*When entering classes please indicate what section eg. A 6 to 12-month Angus Bull would fit in A.C1*

*A 6 to 12-month Limousin Bull would fit in B.C1*

# WAGGA WAGGA SHOW 2023

## BULLS

### Junior

- C1** Bull 6 to 12 months
- C2** Bull 12 to 16 months
- C3** Bull 16 to 20 months

**CHAMPION C1-C3**

**RESERVE CHAMPION**

### Senior

- C4** Bull 20 to 24 months
- C5** Bull 24 to 30 months
- C6** Bull 30 and over

**CHAMPION C4-C6**

**RESERVE CHAMPION**

**GRAND CHAMPION BULL**

## FEMALES

### Junior

- C7** Female 6 to 12 months
- C8** Female 12 to 16 months
- C9** Female 16 to 20 months

**CHAMPION C7-C9**

**RESERVE CHAMPION**

### Senior

- C10** Female 20 to 24 months

## WAGGA WAGGA SHOW 2023

**C11** Female 24 to 30 months

**C12** Female 30 and over

**CHAMPION C10-C12**

**RESERVE CHAMPION**

**GRAND CHAMPION FEMALE**

### COMMERCIAL CLASSES

**C13** Led Trade Steer

**C14** Commercial Heifer

### INTERBREED CLASSES

**C15** Pair of Bulls

**C16** Pair of Females

**C17** Breeders Group

### SUPREME EXHIBIT

**Best Kept Area** At the conclusion of the show, the best-kept area in the Cattle Pavilion will be awarded a prize at Steward's discretion.

*RIBBONS DONATED BY* **WAGGA SHOW SOCIETY**



## **SECTION 6: SHEEP (S)**



**Entries Close: Friday 25<sup>th</sup> August 2023**

Late entries are subject to acceptance by the Chief Steward

### **HOW TO ENTER**

Complete an entry form for both livestock and handlers and other required documents listed, make payment by EFTPOS or cash on the day and send the entry form and proof/choice of payment to Chief Steward [bella.batcheldor@gmail.com](mailto:bella.batcheldor@gmail.com) AND [admin@waggashow.com.au](mailto:admin@waggashow.com.au) INCLUDING Section Name.

Sheep are to be on the Showground by 8:30 am Friday 8th of September if showing on the Friday or 8 am Saturday 9th of September if only showing the Saturday and do not want to come on Friday (unless arranged prior).

No movement of vehicles will be permitted after 9 am or before 4:30 pm unless under Show Society supervision and direction (unless arranged prior)

Can exit on Saturday 9th in the afternoon between (INSERT TIMES) and Sunday 10th from any time.

**All Junior classes for both sheep and cattle will be held on Friday 8th September 2023. All Cattle and sheep classes will be held Saturday 9th September 2023.**

**ENTRY FEES \$5 - per class.**

**\$3 – Junior Judging**

**\$3 – Junior Parading**

**ENVIRONMENTAL LEVY (covers removal and disposal of bedding)**

1 to 3 pens – cost \$10

4 to 6 pens – cost \$20

## **WAGGA WAGGA SHOW 2023**

7 to 9 pens – cost \$30

Over 10 pens – cost \$40

### **PRIZES**

1st, 2nd & 3rd – Ribbon

Champion - Ribbon

Reserve Champion – Ribbon

Grand Champion – Ribbon

Reserve Grand Champion – Ribbon

Supreme – Ribbon

**(prize money to be allocated According to entries)**

### **CHIEF STEWARD**

Miss Isabella Batcheldor-Weule – 0431 384 910

### **STEWARDS**

TBA

### **JUDGE**

TBA

Judging will commence at 9:30 am Friday the 8th of September

Judging time is to be confirmed for Saturday 9th September

### **WAIVERS & DECLARATIONS**

- Exhibitor Indemnity & Waiver Form
- The National Sheep Health Declaration form must be completed
- National Vendor Declaration



## WAGGA WAGGA SHOW 2023

Agricultural Show societies require exhibitors to complete a declaration on the health status of animals participating in shows as part of showground biosecurity. You can find templates here for completion:

<https://www.farmbiosecurity.com.au/toolkit/declarations-and-statements/>

### CONDITIONS OF ENTRY

- Wagga Wagga Shows PIC No. **(insert)**
- All exhibitors will be given wristbands
- All movement of vehicles will be coordinated by the Chief Steward or under Show Society supervision and direction
- Due to other activity around the sheep/ Cattle section, spotters must be used when vehicles are leaving the Sheep/ Cattle section.
- The Wagga Wagga Show Society will supply straw for bedding
- Exhibitors will be required to supply their own fodder
- Exhibitors are strongly advised to ensure that they and their animals are covered by Public Liability Insurance.
- All electrical appliances, e.g. extension cords and blowers must be tagged by a competent person.
- EXHIBITORS, PLEASE NOTE: All rams exhibited must be from an accredited free flock, or a Veterinary Certificate indicating that (a) A manual examination and two negative complement fixation tests for ovine brucellosis not less than 60 days apart, the second test being within 30 days of the show. (b) In his opinion, there is no evidence of ovine brucellosis on the property. Must be presented to and cleared by the chief steward before rams are unloaded.
- All exhibits in this section must be certified to have been well and closely shorn.

## **WAGGA WAGGA SHOW 2023**

- The judges shall have the power to disqualify or mark as disqualified any exhibit which in their opinion, does not comply with the regulations and shall enter the reason. In the event of any protest or disqualification being upheld the next in order shall take its place.
- Prime sheep and lambs are to be judged on commercial value unless otherwise stated.
- Sheep under 1 year are not to show more than 2 teeth, and sheep 1 year and under 2 years are not to show more than 4 teeth. Sheep entered in a class for which it is found they are not eligible owing to the above regulations shall be transferred to a class for which they are eligible. To be able to carry out these rules, judges are instructed to judge young sheep first.

### **JUNIOR CLASSES- Friday 8th September- 9:30 am**

#### **PARADERS**

- JS1** Pee wee: 5 yrs and under 9 yrs
- JS2** Junior: 9 yrs and under 12 yrs
- JS3** Sub-intermediate: 12yrs to under 15 yrs B21
- JS4** Intermediate: 15yrs to under 18yrs
- JS5** Senior: 18 yrs and under 25 years

#### **CHAMPION PARADER (JS1,JS2, JS3, JS4, JS5)**

#### **RESERVE CHAMPION PARADER**

#### **JUNIOR JUDGING**

- JS6** Pee wee: 5 yrs and under 9 yrs
- JS7** Junior: 9 yrs and under 12 yrs
- JS8** Sub-intermediate: 12 yrs to under 15 yrs B21
- JS9** Intermediate: 15 yrs to under 18 yrs

## WAGGA WAGGA SHOW 2023

**JS10** Senior: 18 yrs and under 25 years

**CHAMPION JUNIOR JUDGE (JS6, JS7, JS8, JS9, JS10)**

**RESERVE CHAMPION PARADER**

### **MERINOS INCLUDING POLL MERINOS – Saturday 9th September**

**S1** RAM, Super Fine 4 Tooth and under

**S2** RAM, Super Fine Over 4 Tooth

**CHAMPION S1-S2**

**S3** EWE, Super Fine 4 Tooth and under

**S4** EWE, Super Fine Over 4 Tooth

**CHAMPION S3-S4**

**S5** RAM, Fine 4 Tooth and under

**S6** RAM, Fine Over 4 Tooth

**CHAMPION S5-S6**

**S7** EWE, Fine 4 Tooth and under

**S8** EWE, Fine Over 4 Tooth

**CHAMPION S7-S8**

**S9** RAM, Medium 4 Tooth and under

**S10** RAM, Medium Over 4 Tooth

**CHAMPION S9-S10**

**S11** EWE, Medium 4 Tooth and under

## **WAGGA WAGGA SHOW 2023**

**S12** EWE, Medium Over 4 Tooth

**CHAMPION S11-S12**

**S13** RAM, Strong 4 Tooth and under

**S14** RAM, Strong Over 4 Tooth

**CHAMPION S12-S14**

**S15** EWE, Strong 4 Tooth and under

**S16** EWE, Strong Over 4 Tooth

**CHAMPION S15-S16**

**GRAND CHAMPION MERINO RAM**

**RESERVE GRAND CHAMPION MERINO RAM**

**GRAND CHAMPION MERINO EWE**

**RESERVE GRAND CHAMPION MERINO EWE**

**S17** **Best exhibit of three Merino sheep**

*To consist of 1 Ram and 2 Ewes, any age, any strength of wool*

**FLOCK MERINOS**

**S18** Pen of three (3) ewes 2 tooth & under

**S19** Pen of three (3) ewes 4 tooth & over

**CHAMPION PEN OF FLOCK**

**BORDER LEICESTERS**

**S20** RAM, 2 tooth and over

## **WAGGA WAGGA SHOW 2023**

- S21** RAM, milk teeth  
**S22** RAM milk teeth shorn not more than 4 cm of wool  
**S23** Best pen of 2 Rams milk teeth

**Champion S20-S23**

**Reserve Champion**

- S24** EWE 2 tooth and over  
**S25** EWE milk teeth  
**S26** EWE milk teeth, shorn not more than 4 cm of wool  
**S27** Best pen of 2 Ewes milk teeth

**CHAMPION S24-S27**

**RESERVE CHAMPION**

- S28** **Best Group, 1 Ram, 2 Ewes, any age**  
*To consist of 1 Ram and 2 Ewes, any age*

## **POLL DORSET**

- S29** RAM, 2 tooth and over  
**S30** RAM, milk teeth  
**S31** RAM, milk teeth, shorn(to carry not more than 2cm wool)  
**S32** Pen of 2 RAMS

**CHAMPION S29-S32**

**RESERVE CHAMPION**

- S33** EWE, 2 tooth and over

## WAGGA WAGGA SHOW 2023

- S34** EWE, milk teeth  
**S35** EWE, milk teeth (To carry not more than 2cm wool)  
**S36** Pen of 2 EWE, milk teeth

**CHAMPION S33-S36**

**RESERVE CHAMPION**

- S37** **Best Group, 1 Ram, 2 Ewes, any age**  
*To consist of 1 Ram and 2 Ewes, any age*

## WHITE SUFFOLK

- S38** RAM LAMB, milk teeth  
**S39** RAM, 2 tooth & over  
**S40** Ram milk teeth & shorn wool not more than 2cm  
**S41** Pen of 2 Rams, milk teeth

**CHAMPION S38-S41**

**RESERVE CHAMPION**

- S42** EWE, milk teeth  
**S43** EWE, milk teeth wool not more than 2cm  
**S44** EWE, 2 tooth and over  
**S45** Pen of 2 Ewes, milk teeth

**CHAMPION S42-S45**

**RESERVE CHAMPION**

## WAGGA WAGGA SHOW 2023

### **S46 Best Group, 1 Ram, 2 Ewes, any age**

*To consist of 1 Ram and 2 Ewes, any age*

## **AUSTRALIAN WHITE**

**S47** RAM LAMB, over 3 months and less than 6 months

**S48** RAM LAMB, over 6 months and less than 9 months

**S49** RAM LAMB, over 9 months

**S50** RAM, 2 tooth and over

**S51** PAIR OF RAM LAMB

**CHAMPION S47-S51**

**RESERVE CHAMPION**

**S52** EWE LAMB, over 3 months and less than 6 months

**S53** EWE LAMB, over 6 months and less than 9 months

**S54** EWE LAMB, over 9 months

**S55** EWE, 2 tooth and over

**S56** Pair of EWE lambs

**CHAMPION S52-S56**

**RESERVE CHAMPION**

### **S57 Best Group, 1 Ram, 2 Ewes, any age**

*To consist of 1 Ram and 2 Ewes, any age*

## WAGGA WAGGA SHOW 2023

### ANY OTHER BREED

*Each breed is to be judged individually. Exhibitors must state their breed on the entry form.*

- S58** ANY OTHER BREED RAM, 2 tooth and over
- S59** ANY OTHER BREED RAM, milk tooth
- S60** ANY OTHER BREED EWE, 2 tooth and over
- S61** ANY OTHER BREED EWE, milk tooth

*There will not be a championship award unless there is more than one competitor.*

- S62** Supreme Meat Sheep Group
- S63** Supreme Meat Ram
- S64** Supreme Meat Ewe
  
- S65** 3 Crossbred Lambs, unshorn under 42 kgs
- S66** 3 Crossbred Lambs, shorn (no earlier than Dec 20) under 42kg
- S67** 3 Crossbred Lambs, unshorn 42 - 48kgs
- S68** 3 Crossbred Lambs, shorn (no earlier than Dec 20) 42 - 48kgs
- S69** 3 Crossbred Lambs, unshorn over 48kgs
- S70** 3 Crossbred Lambs, shorn (no earlier than Dec 20) over 48kgs

### CHAMPION PEN OF LAMBS

### CHAMPION PRIME LAMB (TO BE SELECTED FROM ANY PEN)



## WAGGA WAGGA SHOW 2023

**Best Kept Area** At the conclusion of the show, the best-kept area in the Sheep Pavilion will be awarded a prize at Steward's discretion.

# WAGGA WAGGA SHOWS SHEEP EXHIBITORS FORM

Exhibitors Please note:

Sheep health declaration and exhibitor Imedity form **MUST** be completed and submitted with the entry form

This form is just for Sheep classes

### **PLEASE HAVE THIS FORM IN BY 25TH AUGUST 2023**

make payment by EFTPOS and send the entry form, Sheep health declaration, exhibitor Imedity form and proof of payment (if paying by cash on the day please indicate this in the email) to Chief Steward [bella.batcheldor@gmail.com](mailto:bella.batcheldor@gmail.com) AND [admin@waggashow.com.au](mailto:admin@waggashow.com.au) INCLUDING Section Name.

If you have any queries please get in contact with either

Isabella Batcheldor-Weule

email: [bella.batcheldor@gmail.com](mailto:bella.batcheldor@gmail.com)

Ph: 0431384910

Or

The Show Society

Email: [admin@waggashow.com.au](mailto:admin@waggashow.com.au)

Ph: (02) 6925 2180



WAGGA WAGGA SHOW 2023

# WAGGA WAGGA SHOWS JUNIOR CLASSES BOTH SHEEP AND CATTLE EXHIBITORS FORM

PLEASE HAVE THIS FORM IN BY 25TH AUGUST 2023

make payment by EFTPOS and send the entry form, and proof of payment (if paying by cash on day please indicate this in the email) to Chief Steward [bella.batcheldor@gmail.com](mailto:bella.batcheldor@gmail.com) AND [admin@waggashow.com.au](mailto:admin@waggashow.com.au) INCLUDING Section Name.

If you have any queries please get in contact with either

Isabella Batcheldor-Weule

email: [bella.batcheldor@gmail.com](mailto:bella.batcheldor@gmail.com)

Ph: 0431384910

Or

The Show Society

Email: [admin@waggashow.com.au](mailto:admin@waggashow.com.au)

Ph: (02) 6925 2180



**MICHAEL ROSLER**  
**ELECTRICAL**  
**& SOLAR**



WAGGA WAGGA SHOW 2023

# YOUNG AUCTIONEER COMPETITION

## Expression of interest

This competition will be added to the program if we have enough interest and will be held on Saturday (9th) afternoon following all judging of sheep and cattle. It is open to all ages up to 25yrs.

This will only be used as an indication if we are to run one and will be taking official entries for the competition on Friday the 8th of September

ENTRY COST:\$0

**Entries Close: Friday 18<sup>th</sup> August 2023**

Send to Chief Steward [bella.batcheldor@gmail.com](mailto:bella.batcheldor@gmail.com) AND [admin@waggashow.com.au](mailto:admin@waggashow.com.au) INCLUDING Section Name (YOUNG AUCTIONEER).

If you have any queries please get in contact with either

Isabella Batcheldor-Weule

email: [bella.batcheldor@gmail.com](mailto:bella.batcheldor@gmail.com)

Ph: 0431384910

Or

The Show Society

Email: [admin@waggashow.com.au](mailto:admin@waggashow.com.au)

Ph: (02) 6925 2180



# From Your Backyard



# SECTION 7: POULTRY



**Entries Close: Friday 1<sup>st</sup> September 2023**

**ENTRIES posted to: PO Box 7356 Mt Austin Wagga Wagga NSW 2650**

**ENTRY FEE \$1.00 per entry**

**PRIZE MONEY FIRST \$3.00 SECOND \$2.00**

**All prize money for Major Awards donated by Chris & Wendy Whyte (Magpies Nest)  
is greatly appreciated by exhibitors and Committee.**

**Held on SATURDAY 9th September 2023**

**BOB VENN POULTRY PAVILLION**

**JUDGE: Josh Blenkiron**

**Poultry Section Enquiries to:- Wagga Show Society**

**BIRDS ARE TO BE PENNED BY 9.30AM ON THE MORNING OF THE SHOW  
SATURDAY 9th September 2023**

This Show is conducted according to the guidelines of the Wagga Wagga Show Society  
Inc  
constitution and bylaws and is judged to the Australian Poultry Standards.

1. Entries and Entry Fees are to be posted to: Wagga Wagga Show Society P.O. Box 7256, MT AUSTIN, N.S.W. 2650
2. Pen Numbers will be available from the Poultry Steward on the morning of the show.
3. Payment of all entries is binding and is to be paid prior to penning birds.
4. All exhibits must be the bona-fide property of the exhibitor.
5. Although the greatest care will be taken the Wagga Wagga Show Society Inc will not be responsible for any mistakes, accident, loss, injury or damage, from any cause whatsoever.



## WAGGA WAGGA SHOW 2023

6. The committee reserves the right to reject any entry without explanation. Every exhibitor shall be deemed to be and will be held responsible for the health and condition in which his exhibit appears in the show pen.
7. Sick or suspect birds must be removed from the vicinity of the show.
8. Any person causing annoyance by comments on Judge's decision or insulting or unseemly behaviour shall be liable to expulsion from the show and exhibit and/or rewards disqualified.
9. No person is permitted to handle or interfere with exhibits or handle another exhibitor's birds,  
except for the **Show Manager, Judges or Stewards**. Exhibitors are not permitted to handle their birds once judging commences.
10. The committee reserves the right to **re-appoint, add or alter judges** without notifying exhibitors.
11. Birds are not to be removed from their pens prior to the presentation of awards and closure of the show.
12. All exhibits must be removed on day of show unless specific arrangement with the Show Society Manager.
13. Penning on Saturday by 9.30am on 9th September 2023.
14. Leg rings **MUST** be removed.
15. Any exhibitor may refer any protest relating to the conduct of the show and arising on the day of the show to the designated Show Manager in writing including a fee of \$50.00 by 1.00pm of the day of the show.
16. Juniors should place a (J) next to the class they are entering. Juniors are between 5 – 16 years. Juniors may enter in Junior or Open classes **but not both** and will not be eligible to win open class awards or trophies.

**A sash will be awarded to the best of each variety or breed provided there are six (6) entries or more at the time of judging.**

**ALL PRIZE MONEY HAS BEEN DONATED BY CHRIS &  
WNDY WHYTE**

**Magpies Nest**



## **WAGGA WAGGA SHOW 2023**

**Champion Bird in Show (Jim Whyte Memorial)  
\$150.00 & Ribbon**

**Reserve Champion Bird in Show  
\$100.00 & Ribbon**

**Champion Hard Feather in Show  
\$25.00 & Ribbon**

**Champion Soft Feather in Show  
\$25.00 & Ribbon**

**Champion Waterfowl in Show  
\$50.00 & Ribbon**

**Champion Breeding Pair in Show  
\$25.00 & Ribbon**

### **JUNIOR SECTION**

**Champion Junior Bird in Show  
\$50.00 & Ribbon**

**Reserve Champion Bird in Show  
\$25.00 & Ribbon**

**Champion Junior Hard Feather in Show  
\$25.00 & Ribbon**

**Champion Junior Soft Feather in Show  
\$15.00 & Ribbon**

**Champion Junior Waterfowl in Show  
\$20.00 & Ribbon**

### **BEST OF RIBBONS**

**Best Hard Feather Large Male**

**Best Hard Feather Large Female**

**Best Soft Feather Large Male**

## **WAGGA WAGGA SHOW 2023**

**Best Soft Feather Large Female**

**Best Hard Feather Bantam Male**

**Best Hard Feather Bantam Female**

**Best Soft Feather Bantam Male**

**Best Soft Feather Bantam Female**

### **Large Soft Feather**

<b>BREED</b>	<b>MALE</b>	<b>FEMALE</b>
Australorp	1	2
Barnevelder	3	4
Langshan	5	6
Rhode Island	7	8
Sussex	9	10
Wyandotte	11	12
Ancona	13	14
Leghorn White	15	16
Leghorn AOC	17	18
Plymouth Rock	19	20
Minorca	21	22
Silkie	23	24
Welssummer	25	26
AOV Soft Feather Large	27	28
Orpington Black	29	30
Orpington AOC	31	32

## WAGGA WAGGA SHOW 2023

### Large Hard Feather

BREED	MALE	FEMALE
Australian Game AC	33	34
Australian Pit Game	35	36
Indian Game Dark	37	38
Indian Game AOC	39	40
OEG Black Red	41	42
OEG Blue Red	43	44
OEG Brown Red	45	46
OEG AOC	47	48
AOC Large Hard Feather	49	50

### Bantam Soft Feather

BREED	MALE	FEMALE
Ancona	51	52
Australorp	53	54
Belgian	55	56
Plymouth Rock	57	54
Langshan	59	60
Leghorn White	61	62
Leghorn AOC	63	64
Rhode Island	65	66
Pekin Black	67	68
Pekin AOC	69	70
Selkie	71	72
Rosecomb AC	73	74

## WAGGA WAGGA SHOW 2023

Wyandotte White	75	76
Wyandotte AOC	77	78
AOV Soft Feather Bantam	79	80
Orpington Black	81	82
Orpington AOC	83	84

### Bantam Hard Feather

BREED	MALE	FEMALE
Australian Game AC	85	86
Australian Pit Game	87	88
Indian Game Dark	89	90
Indian Game Jubilee	91	92
Indian Game Blue Laced	93	94
Modern Game Black Red	95	96
Modern Game AOC	97	98
OEG Black Red L/L	99	100
OEG Clay-Wheaton L/L AC	101	102
OEG Black Red D/L	103	104
OEG Blue Red	105	106
OEG Duckwing AC	107	108
OEG Ginger	109	110
OEG AOC	111	112
AOV Hard Feather Bantam	113	114



ROTARY CLUB

OF WAGGA WAGGA



## WAGGA WAGGA SHOW 2023

### Waterfowl

BREED	MALE	FEMALE
Indian Runner AC	115	116
Campbell AC	117	118
Muscovy AC	119	120
Rouen	121	122
AOV Waterfowl	123	124

### Breeding Pairs

BREED	
Hard Feather Large	125
Soft Feather Large	126
Hard Feather Bantam	127
Soft Feather Bantam	128
Waterfowl	129





**SECTION 7 POULTRY**

*SPONSORED BY*

**MAGPIES NEST**



*RIBBONS DONATED BY*

**WAGGA WAGGA SHOW SOCIETY**





# **SECTION 8: FARM PRODUCE**



**Entries Close: Friday 1<sup>st</sup> September 2023**

**ENTRY FEE Classes 1 – 18 \$1.00 Classes 19 – 22 \$1.00**

**CHIEF STEWARD: Mr Ken Robinson**

**PRIZE MONEY Classes 1 – 18 FIRST \$4.00 - SECOND \$2.00**

**Classes 19 – 22 FIRST \$4.00 - SECOND \$2.00**

## **CONDITIONS**

1. Exhibits shall be removed from the Hammond Hall on **Sunday 10th September 2023** from  
**9.30am – 11.30am.**
2. Exhibits must be delivered to the Showground by 2.30pm on **Tuesday 5th September 2023.**
3. All exhibits must have been grown by the exhibitor during the season 2022 / 2023 except otherwise stated.
4. Where weights and measures are a condition, they should be taken as “not less than”.
5. The Society will find the boxes and ticket same.
6. All exhibits of wheat **MUST** be a fair sample of the bulk grain and not mill graded or prepared by  
abrasive treatment.
7. Should any sample of wheat found to be affected from weevils or affected by any contagious plant

## **WAGGA WAGGA SHOW 2023**

disease, the same shall be removed from the Showground.

**NOTE:** The Society reserves for itself the right to rake from each or any exhibit a parcel of Wheat not exceeding 2kg weight for the purpose of conducting the necessary milling and baking rests.

### **WHEAT & GRAIN**

**Classes 1 – 2 must not be less than 8kg**, Otherwise the exhibit will be disqualified.

**Classes 1 – 2** are open to all exhibitors.

**Classes 1 – 2 a CHAMPION SASH** will be awarded to the **BEST SAMPLE OF WHEAT** in each class.

If the total number of samples exceeds that which can be handled by the Judge, the Society reserves the right to limit the number of samples shown by any individual; exhibitors therefore are requested to state their order of preference on entries.

**No exhibitor shall remove entries from the Showcase unless accompanied by a Steward.**

**THIS RULE WILL BE STRICTLY ENFORCED**

- 1. Soft Wheats** (sample to carry Variety & Name upon Entry)
- 2. Southern Hard Wheats** (sample to carry Variety & Name upon Entry)

**VARIETIES MUST BE ENTERED IN ACCORDANCE WITH LISTS SHOWN FOR THE TWO (2) CLASSES. The Judge will classify all.**

## WAGGA WAGGA SHOW 2023

### **OATS, BARLEY, COARSE GRAIN, FODDER & PASTURE SEEDS OATS & BARLEY**

Classes 3 – 4 to be no less than 5kg.

3. Oats any variety (sample to carry Variety & Name upon Entry)
4. Barley any variety (sample to carry Variety & Name of Entry)

### **COARSE GRAINS**

5. Lupins
6. Rape Seed (Canola)
7. Safflower Seed
8. Linseed
9. Peas (Dunn)
10. Maize
11. Grain Sorghum
12. Sunflower

### **FODDER**

Any exhibit that, in the opinion of the Judge has been dressed will be disqualified.

13. Baled Lucerne Hay, 6kg
14. Baled Cereal Hay, 6kg

## WAGGA WAGGA SHOW 2023

15. Baled Clover Hay, 6kg
16. Baled Meadow Hay, 6kg Common Mixed
17. Baled Cereal Straw
18. Bundle of Green Fodder, not less than 4kg

## CHAMPION EXHIBIT FARM PRODUCE



## WAGGA WAGGA SHOW 2023

# SECTION 9: COUNTRY WOMEN'S

# ASSOCIATION



**Entries Close: Monday 4<sup>th</sup> September 2023**

**ENTRY FEE: \$10.00 per Branch**

## **COUNTRY WOMEN'S ASSOCIATION INTER-BRANCH COMPETITION**

**Wagga Wagga Show Friday 8th and Saturday 9th September 2023**

**All branches within 80km are eligible.**

### **8 ARTICLES:**

Eight articles may be selected from the following categories: Cooking, Handicrafts, Knitting and crochet, Sewing, Needlework, Floral Art, China Painting, Ceramics and Art.

All work must be done by CWA members. If an entry is by a junior member of the CWA, then "Junior" and their age should be on attached label. A maximum of 100 points will be given per article with a minimum of 60 points.

### **COMPETITIONS AND TROPHIES:**

There are four separate competitions. All trophies shall remain the property of the Wagga Wagga Show Society. The name of the winning Branch each year will be engraved on the Trophy.

## **WAGGA WAGGA SHOW 2023**

All trophy competitions are judged separately. Participation in all competitions is not compulsory.

### **TROPHIES & PRIZES:**

#### **GRACE ALBERNI HONOUR BOARD:**

The Branch that achieves the greatest number of points. Prize cards or ribbons for 1<sup>st</sup>, 2<sup>nd</sup> & 3<sup>rd</sup> will be issued also prize money of 1<sup>st</sup> - \$25.00, 2<sup>nd</sup> - \$15.00, 3<sup>rd</sup> - \$10.00.

#### **BRUNSKILL-BRYSON ROSE BOWL:**

Best display by a Branch.

#### **LYDIA LUCAS ROSE BOWL:**

Most attractive Name Banner. NB: Name Banners should be large enough to read from a distance and keeping with the theme.

#### **MRS L LUCAS TROPHY:**

Judge's Choice: Will be presented to the article that the judges choose as their mutual favourite. Criteria may include, but is not limited to: Unusual, Original, Creative, Champion, etc.

**Prize cards or ribbons will be presented to the winners  
of the Display, Banner and Judges Choice Competition.**

#### **ENTRY TICKETS:**

Will be provided by the Wagga Wagga Show Society. Handicraft officers will add their Court No and Article No. Judges' points will also be written on these tickets. Alternate tickets may be provided by the Branch for display purposes only.

## **WAGGA WAGGA SHOW 2023**

### **COURTS:**

Courts will be allocated to Branches by Draw. Articles must be contained at all time in each Branch's Court. Power is available if required.

### **COURTS SIZE:**

Tables. 182cm long, 75cm wide.

### **JUDGING DAY:**

Will be Thursday 4th November 2022. Handicrafts Officers and their helper can begin to set up their displays after 8.00am. All articles for judging will be placed on the judging tables by 9.45am. Judging will begin at 10.00am, first the articles, then the other competitions. Branches may use approximately 6 items of embellishment to assist in creating their theme for the display judging. Transparent covers over articles may be used.

**Exhibits are to be removed from Hammond Hall on**

**Sunday 10th September 2023 at 9.30am – 11.30am**

WAGGA WAGGA SHOW 2023

# SECTION 10: GARDEN PRODUCE



**Entries Close: Tuesday 5th September 2023**

**ENTRY FEE \$1.00 per entry**

## **CONDITIONS**

1. Exhibits must be delivered to the showgrounds no later than **2.30pm on Thursday 7th September 2023** ready for judging.
2. All exhibits must have been grown by the exhibitor
3. Prize money and entries can be picked up on **Sunday 10th September 2023 between 9.30am – 11.30am**
4. No exhibitor shall remove entries from the showcase unless accompanied by a Steward

### **THIS RULE WILL BE STRICTLY ENFORCED**

5. All exhibits must be clean and free of soil and dead leaves
6. Any pests and diseases found on the exhibits shall be disqualified from entering

**PRIZE MONEY FIRST \$4.00 SECOND \$2.00 unless otherwise stated**



## WAGGA WAGGA SHOW 2023

### EGGS

1. **Dozen Hen Eggs – White**
2. **Dozen Hen Eggs – Brown**
3. **Six Duck Eggs**
4. **Six Turkey Eggs**
5. **Dozen Bantam Eggs**
6. **Dozen eggs, any colour**

### VEGETABLES

MUST BE GROWN BY EXHIBITOR

7. **COLLECTION OF VEGETABLES** FIRST \$5.00 SECOND \$3.00
8. **CABBAGE** one only
9. **ONIONS** not less than 1.35kg (3lb)
10. **SPRING ONIONS** ½ dozen
11. **PUMPKIN** Queensland Blue one only for table use
12. **PUMPKIN** any other variety one only for table use
13. **TURNIPS** three only (3), any variety, on a plate
14. **CARROTS** ½ dozen (6) on a plate
15. **PARSNIPS** three only (3) on a plate
16. **CELERY** one bunch, leaves attached
17. **CAULIFLOWER** one (1) head, any variety
18. **RHUBARB** six sticks (6) leaves attached
19. **POTATOES** ½ dozen, on a plate

## **WAGGA WAGGA SHOW 2023**

20. **LETTUCE** one (1) only, any variety, can be in jar of water
21. **RADISHES** ½ dozen (6) on a plate
22. **BEETROOT** three (3) only on a plate
23. **SILVER BEET OR CHARD** – three (3) stalks with leaves attached
24. **PEAS IN A POD**
25. **BROAD Beans**
26. **Any other variety of vegetable**

### **HERBS**

**Collection of Herbs named and presented in jars of water FIRST \$5.00 SECOND \$3.00**

**MUST BE CLEARLY IDENTIFIED IN A JAR OR JAR OF WATER**

27. **BUNCH OF THYME** – in a jar of water
28. **BUNCH OF SAGE** – in a jar of water
29. **BUNCH OF MINT**– any variety, in a jar of water
30. **BUNCH OF PARSLEY** - (one variety) in a jar of water
31. **BUNCH OF ROSEMARY** - in a jar of water
32. **ANY OTHER BUNCH OF HERBS** – named and presented in a jar of water



## WAGGA WAGGA SHOW 2023

### FRUIT

All exhibits must be presented on a **white paper or plastic plate** (unless stated otherwise) with entry ticket to be attached to the plate.

33. **COLLECTION OF FRUIT** (not less than three (3) of each variety) - presented in a basket  
FIRST \$5.00 SECOND \$3.00
34. **GRAPEFRUIT** any variety three (3) only
35. **ORANGES** Valencia three (3) only
36. **ORANGES** any other variety three (3) only
37. **MANDARINS** three (3) only
38. **LEMONS** Meyer three (3) only
39. **LEMONS** Eureka three (3) only
40. **LEMONS** any other variety three (3) only
41. **APPLES** (late season) three (3) only
42. **CUMQUATS** ½ dozen only
43. **ANY OTHER VARIETY OF CITRUS** three (3) only

### MOST SUCCESSFUL EXHIBITOR IN GARDEN PRODUCE SECTION

**\$25.00 Gift Voucher**

*DONATED BY*

**WAGGA SHOW SOCIETY**



# SECTION 11: HORTICULTURE



**Entries Close: Friday 1<sup>st</sup> September 2023**

**ENTRY FEE     \$0.80 (JUNIOR FLORAL ART)**

**\$1.00 (CUT FLOWERS & SPECIAL SECTION – POTTED PLANTS)**

**STAMPED ADDRESSED ENVELOPE MUST ACCOMPANY ENTRY FORMS**

## **CONDITIONS**

1. Exhibits in the Horticulture Classes MAY be delivered to Hammond Hall on Thursday 7th September 2023, between the hours of 2.00pm OR no later than 4.00pm. Or on the morning of the Show Friday 8th 2023 no later than 9.00am ready for Judging at 9.30am.
2. Exhibits must be staged in the position allotted by the staging committee.
3. All articles for competition or otherwise must be legibly and correctly named on Society's label. Advertising cards ETC are NOT ALLOWED. Embellishments ALLOWED.
4. No table ornament or bouquet of any description shall be made in the hall, except on the tables specially provided
5. No exhibit will be allowed to be removed during the time of the show.
6. Hammond Hall will re-open at 9.30am to 11.30am on Sunday 10th September 2023 for the collection of exhibits.

## WAGGA WAGGA SHOW 2023

**No exhibitor shall remove entries from showcases unless  
accompanied by a Steward.**

### **THIS RULE WILL BE STRICTLY ENFORCED**

7. All flowers etc. shall be considered the property of the Committee until 9.30am Sunday 10<sup>th</sup> September 2023 and they will on production of a card enclosed with entry tickets, be delivered up to the Exhibitor.
8. The Committee will not be responsible for any loss or accident or damage to any exhibit.
9. No protests will be entertained unless they are made in writing and lodged with the Secretary before 12.00 noon on the day of Judging.
10. It is the responsibility of the exhibitors in these classes to supply their own stand or vase and pots **must** have their own tray.
11. **PRESENTATION WILL BE TAKEN INTO ACCOUNT IN JUDGING**
12. All spikes should be legibly labelled with correct name of the plant.
13. Exhibitors name to be entered (on label supplied by the Show society). All labels must be securely attached to exhibits.

## **CUT FLOWERS**

### **CONDITIONS**

1. All flowers in the Cut Flowers Section to be grown by the exhibitor.
2. To be judged for quality and to be shown in containers, which are to be supplied by the exhibitor
3. "DISTINCT" means "DIFFERENT". "NND" means "NOT NECESSARILY DISTINCT".
4. A VASE a container whose height must be more than its diameter

## **WAGGA WAGGA SHOW 2023**

(Diameter is measured 4cm from the top of the vase). Diameter must not exceed 9cm.

5. A **BOWL** is a circular container whose diameter measured across the top is more than the height.
6. Exhibitor to provide their own stand or vase.

**PRIZE MONEY** FIRST \$4.00 SECOND \$ 2.00

### **CUT FLOWERS**

**ENTRY FEE** \$1.00 per entry

1. **Spring in abundance** – in container/vase (flowers from your garden)
2. **Container of mixed Flowering Shrubs**
3. **1 cut Wattle**
4. **Collection of Australian Natives in Flower**
5. **Container of Violets with 6 leaves**
6. **Collection of Poppies**
7. **Collection of Hellebores (Winter Rose)**
8. **6 Pansies/Violas (on a container covered in foil)**
9. **1 Camelia**
10. **3 Camelias NND (Not Necessarily Different)**
11. **3 Erlicheer Jonquils**
12. **3 Cluster Jonquils**
13. **3 Old Fashioned Jonquils**
14. **Collection of Jonquils**
15. **3 Trumpet Daffodils**

## **WAGGA WAGGA SHOW 2023**

16. **3 Yellow Daffodils (e.g. King Alfred)**
17. **3 Double/Butterfly Daffodils**
18. **Collection of Daffodils**
19. **1 Cut Hyacinth**
20. **3 Cuts of Hyacinths NND (Not Necessarily Different)**
21. **4 Cuts Bulbous/Tuber/Corm Any other Spring Flower/s**

### **SPECIAL PRIZE**

**Champion Flower or Flowers Exhibited in Sections 1 – 21**

**\$10.00 & Ribbon**

**For Most Successful Exhibitor in Cut Flower Section**

**\$10.00 & Ribbon**

**Champion for Classes 22 to 35**

### **POTTED PLANTS**

**All pots must be carried in by hand**

**PRIZE MONEY FIRST \$5.00 SECOND \$2.00**

22. **Pot Plant in Flower**
23. **Fern (any type)**

## **WAGGA WAGGA SHOW 2023**

24. **Maidenhair Fern**
25. **Succulents**
26. **Geranium**
27. **Small Pot Plant (under 20cm height)**

### **DECORATIVE / FLORAL ART**

**PRIZE MONEY FIRST \$5.00 SECOND \$2.00**

28. **Fruit and foliage (no flowers)**
29. **Spring is sprung**
30. **Rustic Country**
31. **'Wood in it' be lovely**
32. **'Movie title' must include name**
33. **Shades of yellow**
34. **Photo frame arrangement**
35. **Artificial bridal bouquet**

### **CHILDRENS DECORATIVE / FLORAL ART**

**\$0.80 (JUNIOR FLORAL ART)**

**PRIZE MONEY FIRST \$5.00 SECOND \$2.00**

**Up to 8 years of Age**



## WAGGA WAGGA SHOW 2023

- 36. Arrangement in a cup and saucer
- 37. Posy of Flowers

Up to 9 – 15 years of Age

- 38. Arrangement in an egg cup
- 39. 1 Flower and Foliage

### SECTION 11 HORTICULTURE

*RIBBONS & PRIZEMONEY DONATED BY*  
**WAGGA SHOW SOCIETY**



## **SECTION 12: ARTS & CRAFTS**



**Entries Close: Friday 1<sup>st</sup> September 2023**

**STAMPED ADDRESSED ENVELOPE MUST ACCOMPANY ENTRY FORMS**

### **CONDITIONS**

**Entries will only be accepted if accompanied by a stamped addressed envelope or the inclusion of \$1.50 to cover costs of the return of entry tickets.**

**ALL ENTRIES ARE TO BE HAND DELIVERED OR POSTED AND ACCOMPANIED BY APPROPRIATE FEES.**

**ALL EXHIBITS IN THIS section MUST be delivered to the Showground between the hours of 10.00am to 2.00pm Saturday 2<sup>nd</sup> September, 2023.**

1. All exhibits throughout this Section must be the bona fide work of the exhibitor. Work is to be original. All articles, which have been exhibited at a previous Wagga Show, will not be eligible. Work must have been completed within twelve (12) months prior to the first Judging day of the show. Soiled work will not be accepted.

2. All exhibits shall be inspected by a Selection Committee appointed by the Society.

The Committee shall have the power to withhold any exhibit from being brought before the Judge. Every endeavour shall be made to exhibit all entries, but should space be restricted or for any other reason the Committee reserves the right to determine which entries will be displayed. The printed declarations enclosed with the Entry Tickets must be signed by the Exhibitor and then attached to the back of Fine Art and Hand Painted China entries only.

3. The declaration reads "I declare that the whole of the work in this exhibit is original and executed by me after the "1<sup>st</sup> October 2021". No entry in one class may be entered another class. The committee shall exercise every care with the work submitted but will not be responsible for loss, any damage or breakage of any exhibit while in their custody nor for insurance of exhibits either in transit or while on exhibition. All transport and insurance expenses to be met by the exhibitor.

## **WAGGA WAGGA SHOW 2023**

4. Exhibitors entering in Sections 14 - 17 will have free entry after the first fifty (50) entries in total in each of these four (4) Sections.
5. Prizes will not be awarded unless work – is of good standard. The decision of the Judges is final and no correspondence or discussion will be entered into.

**ALL CONDITIONS WILL BE STRICTLY ENFORCED**

**NO ENTRIES OR PRIZE MONEY WILL BE AVAILABLE FOR COLLECTION PRIOR TO**

**SUNDAY 10th September 2023**

Hammond Hall will be open between **9.30am and 11.30am on Sunday 10th September 2023** for the removal of exhibits and payment of prize money. Delivery must be made by the Stewards and only on production of the card enclosed with the entry ticket. Exhibits not collected and which are to be returned should clearly outlined instruction attached to the entry ticket or exhibit and **MUST** be accompanied by return postage.

**No exhibitor shall remove entries from the showcase  
unless accompanied by a Steward**

**THIS RULE WILL BE STRICTLY ENFORCED**



## **WAGGA WAGGA SHOW 2023**

### **FINE ARTS**

**ENTRY FEE \$2.50**

**PRIZE MONEY** FIRST \$10.00 SECOND \$ 3.00 (CLASSES 1 – 7)

**Fine Arts include Painting, Printmaking and Sculptures**

**ALL PAINTINGS MUST BE SUITABLEY FRAMED AND TO HAVE SCREW-EYES ATTACHED 75MM EITHER SIDE FROM THE TOP OR THEY WILL NOT BE ACCEPTED IN THESE CLASSES**

**ALL ENTRY-TICKETS TO BE VISIBLE AND ATTACHED TO THE EXHIBIT**

**THE PRINTED DECLARATION MUST BE SIGNED BY THE EXHIBITOR AND THEN GUMMED ON THE BACK OF THE PAINTINGS**

1. **LANDSCAPE** any media
2. **FIGURE COMPOSITION** any media
3. **TRADITIONAL** subject any media
4. **WATER COLOUR** any subject
5. **MODERN CONTEMPORARY** any subject any media
6. **DRAWING** (Pen and Ink, Charcoal, Crayon, Conte etc.)
7. **TRADITIONAL DOT ART**

**WAGGA WAGGA SHOW SOCIETY PRIZE \$50.00**

**BEST PAINTING IN ANY MEDIUM**

**Printed declaration must be signed and pinned NOT glued to the entry ticket.**

## **WAGGA WAGGA SHOW 2023**

### **CRAFTS**

**ENTRY FEE \$1.00**

**PRIZE MONEY FIRST \$4.00 SECOND \$ 2.00 (unless otherwise stated)**

- 8. JEWELLERY**
- 9. CRAFT MADE FROM RECYCLED MATERIALS**
- 10. BEST EXHIBIT OF WOODWORK – Turning**
- 11. BEST EXHIBIT OF WOODWORK – Large Article**
- 12. BEST EXHIBIT OF WOODWORK – Small Article**
- 13. BEST EXHIBIT OF WOODWORK – Veneer Work**
- 14. BEST EXHIBIT OF METAL WORK**
- 15. BEST EXHIBIT OF LEATHER WORK**
- 16. ADULT COLOURING IN**
- 17. ANY OTHER CRAFT (other than provided for)**

### **DECORATIVE ART**

**ENTRY FEE \$1.00**

**Any framed artwork must have hooks for hanging (NO GLASS)**

- 18. DIAMOND PAINTING – Any Subject FULL**
- 19. DIAMOND PAINTING – Birds or Animals FULL**
- 20. DIAMOND PAINTING – Any subject PARTIAL**
- 21. DIAMOND PAINTING – Bird or animals PARTIAL**

## WAGGA WAGGA SHOW 2023

### JUNIOR ART

FOR STUDENTS ATTENDING PRIMARY & SECONDARY SCHOOLS

Any framed Artwork must have hooks for hanging

ENTRY FEE \$1.00

PRIZE MONEY FIRST \$4.00 SECOND \$ 2.00 (unless otherwise stated)

22. **TRADITIONAL PAINTING** Any subject, any media, 17 years and under.
23. **ABSTRACT PAINTING** Any media 17 years and under.
24. **DRAWING** Any media 17 years and under.
25. **TRADITIONAL PAINTING** Any subject, any media, 12 years and under.
26. **ABSTRACT PAINTING** Any media 12 years and under.
27. **DRAWING** Any media 12 years and under.
28. **PAINTING** Any subject and medium 8 – 9 years.
29. **PAINTING** Any subject and medium 6 – 7 years.
30. **PAINTING or DRAWING** Kindergarten classes.
31. **COLLAGE** For students attending Primary Schools

**CHAMPION EXHIBIT IN JUNIOR ART (FROM CLASSES 22 – 37)**

**\$10.00 VOUCHER *DONATED BY***

**WAGGA SHOW SOCIETY**



## **WAGGA WAGGA SHOW 2023**

### **JUNIOR CRAFT**

**FOR STUDENTS ATTENDING PRIMARY & SECONDARY SCHOOLS**

**ENTRY FEE \$1.00**

**PRIZE MONEY FIRST \$4.00 SECOND \$ 2.00 (unless otherwise stated)**

- 32. BEST EXHIBIT OF POTTERY**
- 33. BEST EXHIBIT OF SCULPTURE – Any medium, any technique**
- 34. BEST EXHIBIT OF WOODWORK**
- 35. BEST EXHIBIT OF BEADED ARTICLE**
- 36. CRAFT MADE FROM RECYCLED MATERIALS**
- 37. BEST EXHIBIT OF CRAFT OTHER THAN PROVIDED FOR**

### **LOOM BANDS**

**FOR STUDENTS ATTENDING PRIMARY**

**ENTRY FEE \$1.00**

**PRIZE MONEY FIRST \$4.00 SECOND \$ 2.00 (unless otherwise stated)**

- 38. BEST EXHIBIT OF BRACELET**
- 39. BEST EXHIBIT OF ANIMAL**
- 40. BEST EXHIBIT OF KEY RING**

## WAGGA WAGGA SHOW 2023

### LEGO

- All exhibits must be presented on a firm base the size being 25cm x 30cm no larger.
- All exhibits' Classes 41, 42 and 43 must include a set number on entry form if modified or enhanced. For open builds state "open" on entry form.
- All works to be completed by exhibitor and built within the last twelve (12) months.
- Entries are accepted entirely at exhibitors' own risk. The Wagga Wagga Show Society will not be liable for any loss or damages to exhibitors however care will be taken to avoid loss or damage.

#### **41. ARTICLE MADE FROM (LARGE) DUPLO BLOCKS UNDER 5 YEARS**

#### **42. ARTICLE MADE FROM LEGO BLOCKS** (not Lego Technics, not to exceed 32cm x32cm)

7 Years and Under

#### **43. ARTICLE MADE FROM LEGO BLOCKS** (not Lego Technics, not to exceed 32cm x 32cm)

8 – 11 years

#### **44. ARTICLE MADE FROM LEGO TECHNICS** (single item Large)

#### **45. ARTICLE MADE FROM LEGO TECHNICS** (single item Small)

#### **46. ARTICLE MADE FROM LEGO KITS** (single item Large)

#### **47. ARTICLE MADE FROM LEGO KITS** (single item Small)

#### **48. ARTICLE MADE BY ADULT 18 YEARS AND OVER**

### **CHAMPION EXHIBIT IN JUNIOR CRAFT (CLASSES 32 – 37)**

**\$10.00 DONATED BY C.W.A. OURA BRANCH**



## **WAGGA WAGGA SHOW 2023**

### **SPECIAL SECTION FOR PEOPLE ATTENDING DAY CARE CENTRES AND PEOPLE WITH DISABILITIES**

#### **ENTRY FEE NIL**

**PRIZE MONEY FIRST \$4.00 - SECOND \$ 2.00 (unless otherwise stated)**

- 49. BEST EXHIBIT OF CRAFT SUITABLE FOR GIFT**
- 50. ANY ITEM OF CREATIVE EXPRESSION** e.g. Poem, Story etc. (no more than three pages)
- 51. BEST EXHIBIT OF PAINTING** (Water Colour)
- 52. BEST EXHIBIT OF PAINTING** (Acrylic)
- 53. BEST EXHIBIT OF PAINTING** (Mixed Media)
- 54. BEST EXHIBIT OF SKETCH** (freehand)
- 55. BEST ARTICLE** (made by Woman)
- 56. BEST ARTICLE** (made by Man)
- 57. BEST EXHIBIT BY A GROUP**
- 58. MOST INTERESTING CRAFT IDEA**
- 59. BEST EXHIBIT OF COLLAGE**
- 60. BEST EXHIBIT MADE BY A PERSON WITH PHYSICAL IMPAIRMENT**
- 61. BEST EXHIBIT OF COLOURING IN**
- 62. BEST EXHIBIT OF ARTICLE OF / WITH PAPER**
- 63. BEST EXHIBIT OF WIREWORK**
- 64. BEST EXHIBIT OF SOMETHING NEW FROM SOMETHING OLD**
- 64A BEST EXHIBIT- SERIES OF THREE**
- 64B BEST EXHIBIT- GARDEN ART**
- 64C BEST EXHIBIT OF SCULPTURE**
- 64D BEST EXHIBIT OF WOODWORK**
- 64E BEST EXHIBIT OF MOSAIC**

**PRIZE MONEY DONATED BY WAGGA WAGGA SHOW SOCIETY**

## **WAGGA WAGGA SHOW 2023**

### **SPECIAL SECTION FOR PEOPLE ATTENDING NURSING HOMES**

#### **ENTRY FEE NIL**

**PRIZE MONEY FIRST \$4.00 SECOND \$ 2.00 (unless otherwise stated)**

- 65. BEST EXHIBIT OF CRAFT SUITABLE FOR A GIFT**
- 66. BEST EXHIBIT OF CRAFT MADE WITH A PADDLE POP STICKS, MATCHES OR PEGS**
- 67. BEST EXHIBIT OF CRAFT OTHER THAN PROVIDED FOR**
- 68. BEST EXHIBIT OF PAINTING, SKETCH OR COLOURING IN**
- 69. BEST EXHIBIT OF CHRISTMAS DECORATIONS**
- 70. BEST EXHIBIT MADE FROM A CARD OR CALENDAR**
- 71. BEST ARTICLE MADE FROM A BOOK NO LARGER THAN A READER'S DIGEST OR  
WOMAN'S WEEKLY**
- 72. BEST ARTICLE (made by Woman)**
- 73. BEST ARTICLE (made by Man)**
- 74. BEST EXHIBIT OF CRAFT (made by a one – handed person)**
- 75. BEST EXHIBIT BY A PERSON WITH PHYSICAL IMPAIRMENT**
- 76. BEST EXHIBIT BY A GROUP**

**WAGGA WAGGA SHOW 2023**

**THE WAGGA WAGGA SHOW SOCIETY**

**GRATEFULLY ACKNOWLEDGES THE FOLLOW-  
ING FOR**

**THEIR DONATIONS TROPHIES, VOUCHERS OR  
PRIZE**

**C.W.A. OURA BRANCH**

**PRIZE MONEY *DONATED BY***

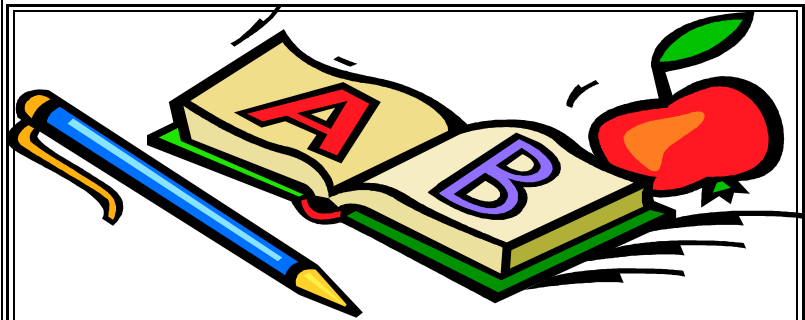
**WAGGA SHOW SOCIETY**



WAGGA WAGGA SHOW 2023



**SECTION 13: PRE SCHOOL**



***ATTENTION  
ALL TEACHERS***

***This year the Annual Wagga  
Wagga Show is celebrating  
157 years***

***PRE-SCHOOLWORK COMPETITION***

## SECTION 14: SCHOOL WORK

Entries Close: Friday 18<sup>th</sup> August 2023



### NOTE TO TEACHERS:

Please follow the guidelines regarding size of paper, length of items etc.

Larger Woodwork pieces can be entered in Arts & Crafts **SECTION 14**

Photographs can be entered in Photography **SECTION 15**

We would welcome any suggestions for the 2023 Show Schedule

---

## WAGGA WAGGA SHOW 2023

The Show will be held on the 8<sup>th</sup> & 9th September 2023

Entry forms will have to be faxed to the Chief Steward by Friday 18th August 2023

[admin@waggashow.com.au](mailto:admin@waggashow.com.au)

The actual entries will have to be delivered to HAMMOND HALL by 1<sup>st</sup> September 2023.

Judging will commence on Sunday 3rd September 2023.

---

## ENTRY CERTIFICATES

1. **The Blue catalogue card is to be securely attached to the front of the work.**
2. **The White stickers are to be filled out by the teacher and stuck on the back of the entry.**
3. **All handwritten work must be done on a single sheet of school paper.**
4. **Every exhibit will be submitted but not necessarily exhibited, as space may be limited.**

---

**All entries are to be collected after the Show.**

We would appreciate any teacher's help in taking down the schoolwork on Sunday 10<sup>th</sup> September 2023 and sorting it into school lots. You can take your school's work back with you along with the prize money, which you can collect from the Show Office.

## **WAGGA WAGGA SHOW 2023**

When you submit your entry forms, please include **\$27.50** being for your school's entry fee, which can be invoiced to the school by contacting the office on 0427252180

**CHIEF STEWARD: Mrs Leanne Rodd**

**PHONE NUMBER: 0428725184**

**1. POETRY Year 1 – Year 2.**

**A short versed poem. Handwritten or typed. Any topic.**

**2. POETRY Year 3 – Year 4.**

**Write an Acrostic poem on your pet or animal.**

**3. POETRY Year 5 – Year 6.**

**Write a two-verse Limerick of your choice.**

**4. HANDWRITING Kinder.**

**Write four lines of letters and two lines of patterns.**

**5. HANDWRITING Year 1.**

**Write a Nursery Rhyme and a line of pattern.**



**WAGGA WAGGA SHOW 2023**

**6. HANDWRITING Year 2.**

**The Ginger Bread man**

Run, run as fast

As you can.

You can't catch me.

I'm the Gingerbread Man!

**7. HANDWRITING Year 3**

**The Rabbit at Menangle**

A Rabbit who lived at Menangle

Said, "Really, my fur's in a tangle!

Shall I have a close shave

Or a permanent wave,

Or plait it or just let it dangle?

**8. HANDWRITING Year 4**

**Thunderbolt**

Thunderbolt came from the Hawkesbury River,

He was a bushranger, he was a rover.

Made all the rich folks shudder and shiver,

Wore fine clothes and lived in clover.

Riding high on a thoroughbred colt,

Bad man, bushranger, Thunderbolt.

## WAGGA WAGGA SHOW 2023

### 9. HANDWRITING Year 5.

#### **Andy's gone with Cattle**

Our Andy's gone with cattle now,

Our hearts are out of order.

With drought he's gone to battle now

Across the Queensland border

He's left us in dejection now;

Our thoughts are with him roving.

It's dull on this selection now

Since Andy went a droving.

And may good angels sent the rain

On desert stretches sandy;

And when the Summer comes again

God grant "twill bring us Andy.

HENRY LAWSON

### 10. HANDWRITING Year 6

#### **Magpies**

Along the road the magpies walk

With hands in pockets, left and right

## **WAGGA WAGGA SHOW 2023**

They tilt their heads, and stroll and talk,  
In their well fitted black and white.

They look like certain gentleman  
Who seem most nonchalant and wise,  
Until their meal is served – and then  
What clashing beaks, what greedy eyes!

But not one man that I have heard  
Throws back his head in such a song  
Of grace and praise – no man nor bird.  
Their greed is brief: their joy is long,  
For each is born with such a throat  
And thanks his God with every note.

**Judith Wright**

- 11. INTEGRATED THEME WORK      Year 3 – Year 4.**  
**Diorama or model with a seaside theme.**
- 12. INTEGRATED THEME WORK      Year 5 – Year 6.**  
**Diorama or model of a solar system theme.**
- 13. COMPUTER ART      Kinder.**  
**Using a “draw” programme, draw a picture of themselves.**
- 14. COMPUTER ART      Year 1 – Year 2.**  
**Design a poster promoting Road Safety.**

## WAGGA WAGGA SHOW 2023

- 15. COMPUTER ART Year 1 – Year 2.**  
Create a free choice picture using NO clip art.
- 16. COMPUTER ART Year 3 – Year 4.**  
Design an advertisement to promote Outback Australia.
- 17. COMPUTER ART Year 3 – Year 4.**  
Create a free choice picture using NO clip art.
- 18. COMPUTER ART Year 5 – Year 6.**  
Create a free choice picture using NO clip art.
- 19. DIGITAL PHOTO Year 3 – Year 4.**  
“Around our School”, coloured or black and white.
- 20. DIGITAL PHOTO Year 5 – Year 6.**  
“Around our School”, coloured or black and white.
- 21. LITERATURE Years 3 – Year 4.**  
Write a free choice narrative. (500 words).
- 22. LITERATURE Years 5 – Year 6.**  
Write a free choice narrative.(500 words).
- 23. WOODCRAFT Year 3 – Year 4.**  
Any creative object made form paddle pop sticks, matchsticks or wooden pegs.
- 24. WOODCRAFT Year 5 – Year 6.**  
Any creative object made from paddle pop sticks, matchsticks or wooden pegs.
- 25. PAPER CRAFT Kinder.**  
Make a paper plate mask of an animal.

## WAGGA WAGGA SHOW 2023

- 26. PAPER CRAFT      Year 1 – Year 2.**  
Make a mask for a clown.
- 27. PAPER CRAFT      Year 3 – Year 4.**  
Make a festive mask.
- 28. PAPER CRAFT      Year 5 – Year 6.**  
Make a card for a special occasion eg. Christmas, birthday, etc
- 29. MODELLING CRAFT      Kinder.**  
Any article made from pottery, wire, pipe cleaners, plasticine or paper mache.
- 30. MODELLING CRAFT      Year 1 – Year 2.**  
Any article made from pottery, wire, pipe cleaners, plasticine or paper mache.
- 31. MODELLING CRAFT      Year 3 – Year 4.**  
Make a creature using pompoms.
- 32. MODELLING CRAFT      Year 5 – Year 6.**  
Any article made from pottery, wire, pipe cleaners, plasticine or paper mache.
- 33. ARTICLE MADE FROM RECYCLED MATERIALS**  
Year 1 – Year 2      Design a Small boat.
- 34. ARTICLE MADE FROM RECYCLED MATERIALS**  
Year 3 – Year 4      Design a train no longer than 1 meter.
- 35. ARTICLE MADE FROM RECYCLED MATERIALS**  
Year 5 – Year 6      Design a Free choice
- 36. COLLAGE**  
Year 1 – Year 2.      Create a collage with an Animal theme.

## WAGGA WAGGA SHOW 2023

37. **COLLAGE** Year 3 – Year 4.  
Create a collage with a Farm theme.
38. **COLLAGE** Year 5 – Year 6.  
Create a collage with a Outer Space theme.
39. **BORDER DESIGN** Year 3 – Year 4. On A4 paper.
40. **BORDER DESIGN** Year 5 – Year 6. On A4 paper.
41. **GEOMETRIC DESIGN** Year 3 – Year 4. On A4 paper.
42. **GEOMETRIC DESIGN** Year 5 – Year 6. On A4 paper.
43. **ABORIGINAL ARTS** Year 3 – Year 4.  
On art paper compose a picture using any Aboriginal style.
44. **ABORIGINAL ARTS** Year 5 – Year 6.  
On art paper compose a picture using any Aboriginal style.
45. **ART** Kinder.  
Picture making using any or mixed media.
46. **ART** Year 1 – Year 2.  
Picture making using any or mixed media.
47. **ART** Year 3 – Year 4.  
Picture making using any or mixed media.
48. **ART** Year 5 – Year 6.  
Picture making using any or mixed media.
49. **SHOW POSTER** PRIMARY CLASSES  
Design a poster for the 2023 Wagga Wagga Show.

## WAGGA WAGGA SHOW 2023

### CLASSES 50 TO 54 ARE FOR PUPILS ATTENDING A SPECIAL NEEDS SCHOOL OR CLASS

- 50. ANY ITEM OR VISUAL ART Student 8 years or younger.
- 51. ANY ITEM OR VISUAL ART Student 8 years and over.
- 52. ANY ITEM OF HANDWRITING Student 8 years or younger.
- 53. ANY ITEM OF HANDWRITING Student 8 years and over.
- 54. ANY CLASS DISPLAY 1.5M X 1M

### CLASS ENTRIES

- 55. Primary class any class mural or model
- 56. Infant classes any class mural
- 57. All classes any display relating to Book Week

### CHAMPION PRIZES

A Champion prize of \$10.00 and a Ribbon will be awarded to the best exhibit of craft in the show. Emphasis will be placed on creativity and originality of work.

A Champion prize of \$10.00 and a Ribbon will be awarded to the best hand writer of the show.

## ENTRY FORM

### SECTION 14 – SCHOOL WORK







# WAGGA WAGGA SHOW 2023

## 2023 WAGGA WAGGA SHOW

### SECTION 16 – SCHOOL WORK

**NOTE TO TEACHERS:** Please follow the guidelines regarding size of paper, length of items ect.

Larger Woodwork pieces can be entered in Arts & Crafts **SECTION 14**

Photographs can be entered in Photography **SECTION 15**

We would welcome any suggestions for the 2023 Show Schedule

---

The Show will be held on the 8<sup>th</sup> & 9th September 2023

Entry forms will have to be faxed to the Chief Steward by Friday 18th August 2023

[admin@waggashow.com.au](mailto:admin@waggashow.com.au)

The actual entries will have to be delivered to HAMMOND HALL by 1<sup>st</sup> September 2023.

Judging will commence on Sunday 2<sup>nd</sup> September 2023.

---

### ENTRY CERTIFICATES

1. **The Blue catalogue card is to be securely attached to the front of the work.**
  2. **The White stickers are to be filled out by the teacher and stuck on the back of the entry.**
  3. **All handwritten work must be done on a single sheet of school paper.**
  4. **Every exhibit will be submitted but not necessarily exhibited, as space may be limited.**
- 

**All entries are to be collected after the Show.**

We would appreciate any teacher's help in taking down the schoolwork on Sunday 10<sup>th</sup> September 2023 and sorting it into school lots. You can take your school's work back with you along with the prize money, which you can, collect from the Show Office.

When you submit your entry forms, please include **\$27.50** being for your school's entry fee, which can be invoiced to the school by contacting the office on 0427252180

**CHIEF STEWARD:** Mrs Leanne rodd

**PHONE NUMBER:** 0428725184

# SECTION 15: CHAMPIONSHIP DOG SHOW



**Entries Close: Friday 1<sup>st</sup> September 2023**

## WAGGA WAGGA SHOW SOCIETY

**ALL BREEDS CHAMPIONSHIP SHOW**

## WAGGA WAGGA SHOWGROUND, BOURKE ST, WAGGA WAGGA

### SATURDAY 9th September 2023

Classes to be judged: 1, 2, 3, 4, 5, 10, 11 & 18 (dogs & bitches)

- Entries to: Show Secretary, 59 Eldershaw Dr, Forest Hill 2651 Ph & Extreme Weather Ph: 0401 234 643
- Cheques made payable to: Wagga Wagga Show Society
- JUDGES
- Mrs R Williams (NSW) Toys, Gundogs, Utility, General Specials
- Mr G Dryburgh (NSW) Terriers, Hounds, Working Dogs, Non-Sporting
- Order of Judging:
- **Ring 1** Toys, Gundogs, Utility, General Specials
- **Ring 2** Terriers, Hounds, Working Dogs, Non-Sporting
- Judging Commences: 9.00am
- DOGS NSW Breed Representative: Mrs A Quigley Entry Fees: \$12.00 per class, \$6.00 Baby Puppies Catalogues: \$5.00
- Ground Admittance: Adults \$15.00, Children \$10.00, Concessioners \$5.00, Exhibitors by pass.
- Bitches in Oestrus may be shown
- PRIZES - Category B
- General Specials: Cash & Sash Group Specials:  
Cash & Sash



**ShowManager**.com.au

*"More than just online entries"*



## WAGGA WAGGA SHOW 2023

# SECTION 16: PHOTOGRAPHY



**Entries Close: Friday 1<sup>st</sup> September 2023**

1. Entries forms should be sent to the Wagga Show Society Secretary P.O. Box 7256  
MT AUSTIN NSW 2650 (along with entry fees)
2. ENTRIES TO BE LEFT AT HAMMOND HALL **SATURDAY 2<sup>nd</sup> SEPTEMBER 2023**  
BETWEEN **10.00am – 12.30pm**
3. ENTRIES MAY BE COLLECTED AT HAMMOND HALL **SUNDAY 10th September 2023**  
BETWEEN **9.30am – 11.30am.**
4. ALL PHOTOS MUST BE A4 OR 8X10.
5. All Photos must be put on mounts.
6. ALL NAMES MUST BE ON THE BACK OF EACH PHOTOGRAPH.
7. Neatness of presentation and clean mounting of photographs will be taken into consideration.
8. No identification must not be visible on the front of the photograph.
9. All photographs should be mounted on matt/gloss finish with a hanging mount, at the  
top in the middle. This will make displaying easier.
10. Entries are to be entered in one section only.
11. White entry tickets to be at left hand side at top of photo.

**NO RESPONSIBILITY TAKEN FOR ENTRIES LEFT IN THE HALL**

**AFTER 11.30am ON SUNDAY 10th September 2023**

**NO GLASS WILL BE ACCEPTED.**

**No exhibitor shall remove photos unless accompanied by a Steward.**

**THIS RULE WILL BE STRICTLY ENFORCED**

## WAGGA WAGGA SHOW 2023

### OPEN

ENTRY FEE: \$1.50 per entry

PRIZE MONEY: (Gift Vouchers Donated by Harvey Norman - Wagga)

1. PORTRAIT (Traditional)
2. RURAL AUSTRALIA
3. SPORTS
4. SUNRISES / SUNSETS / WATER / SKY
5. PLANT
6. BLACK & WHITE (Any Subject)
7. ANIMAL
8. YESTERYEAR
9. LANDSCAPE
10. ANY OTHER SUBJECT

### AMATEUR

ENTRY FEE: \$1.50 per entry

PRIZE MONEY: (Gift Vouchers Donated by Harvey Norman - Wagga)

(For a person who does not receive financial gain from their hobby)

11. PORTRAIT (Traditional)
12. RURAL AUSTRALIA
13. SPORTS
14. SUNRISES / SUNSETS / WATER / SKY
15. PLANT
16. BLACK & WHITE (Any Subject)
17. ANIMAL
18. YESTERYEAR
19. LANDSCAPE
20. ANY OTHER SUBJECT

## WAGGA WAGGA SHOW 2023

### PHONE CAMERA PHOTO

ENTRY FEE: \$1.50 per entry

PRIZE MONEY: (Gift Vouchers Donated by Harvey Norman - Wagga)

21. PORTRAIT (Traditional)
22. RURAL AUSTRALIA
23. SPORTS
24. SUNRISES / SUNSETS / WATER / SKY
25. PLANT
26. BLACK & WHITE (Any Subject)
27. ANIMAL
28. YESTERYEAR
29. LANDSCAPE
30. ANY OTHER SUBJECT



## **WAGGA WAGGA SHOW 2023**

### **JUNIOR 18 YEARS AND UNDER**

**ENTRY FEE:** \$1.50 per entry

**PRIZE MONEY:** (Gift Vouchers Donated by Harvey Norman - Wagga)

31. **PORTRAIT** (Traditional)
32. **RURAL AUSTRALIA**
33. **SPORTS**
34. **SUNRISES / SUNSETS / WATER / SKY**
35. **PLANT**
36. **BLACK & WHITE** (Any Subject)
37. **ANIMAL**
38. **YESTERYEAR**
39. **LANDSCAPE**
40. **ANY OTHER SUBJECT**

### **JUNIOR PRIMARY SCHOOL STUDENTS ONLY**

**ENTRY FEE:** Nil

**PRIZE MONEY:** (Gift Vouchers Donated by Harvey Norman - Wagga)

41. **PORTRAIT** (Traditional)
42. **RURAL AUSTRALIA**
43. **SPORTS**
44. **SUNRISES / SUNSETS/ WATER / SKY**
45. **PLANT**
46. **BLACK & WHITE** (Any Subject)
47. **ANIMAL**
48. **YESTERYEAR**
49. **LANDSCAPE**
50. **ANY OTHER SUBJECT**

## **WAGGA WAGGA SHOW 2023**

### **SNAPSHOT**

### **ENTRY FEE NIL**

**ANY SUBJECT - COLOUR, BLACK & WHITE ACCEPTABLE**

**NO PRIZE MONEY RIBBON ONLY**

**ALL PHOTOS ARE TO BE MOUNTED ON MATT FINISH WITH A HANGING MOUNT IN THE  
CENTRE, THIS WILL MAKE DISPLAYING EASIER.**

**NO GLASS WILL BE ACCEPTED**

**CHAMPION OPEN PRINT VOUCHER & RIBBON**

**CHAMPION AMATEUR PRINT VOUCHER & RIBBON**

**CHAMPION CAMERA PHONE PRINT VOUCHER & RIBBON**

**CHAMPION JUNIOR PRINT VOUCHER & RIBBON**

**CHAMPION JUNIOR PRIMARY PRINT VOUCHER & RIBBON**

**MOST SUCCESSFUL EXHIBITOR VOUCHER & RIBBON**

**GRAND CHAMPION VOUCHER & ROSETTE**



**WAGGA WAGGA SHOW 2023**

**SECTION 16 PHOTOGRAPHY**

*SPONSORED BY*

**HARVEY NORMAN WAGGA WAGGA**



*RIBBONS DONATED BY*

**WAGGA SHOW SOCIETY**



## WAGGA WAGGA SHOW 2023

# SECTION 17: NEEDLEWORK & KNITTING



**Entries Close: Friday 1<sup>st</sup> September 2023**

**STAMPED ADDRESSED ENVELOPE MUST ACCOMPANY ENTRY FORMS IF YOU REQUIRE YOUR ENTRY TICKETS RETURNED**

**NOTE: For Amateurs only**

### **CONDITIONS**

Entries will only be accepted if accompanied by a stamped addressed envelope or the inclusion of \$1.40 cents to cover the return of entry tickets.

**All entries are to be hand delivered or posted and accompanied by appropriate fees.**

**All exhibits in this Section MUST be delivered to the Wagga Showground between the hours of 10.00 – 2.00pm on Saturday 2nd September 2023.**

As this condition will be strictly enforced, Exhibitors living at a distance are advised to see that their exhibits are posted or consigned early.

Judging will commence **at 9.30am on Monday 4th September, 2023.**

1. All exhibits in this Section must be the bona fide work of the exhibitor and completed within the last two years.
2. Exhibits that have previously taken a prize at the Wagga Show shall not be eligible to compete.
3. All exhibits shall be inspected by a Selection Committee appointed by the Society.
4. Cleanliness is essential. The Committee shall have the power to withhold any exhibit being brought before the judges.
5. An exhibit shall not receive an award if, in the opinion of the Judge, it is unworthy of such an award.
6. The decision of the Judge is final, and no correspondence or discussion will be entered.
7. No entry made in one class can be entered another class.

## **WAGGA WAGGA SHOW 2023**

8. The printed declaration, enclosed with the exhibitor tickets, must be signed by the exhibitor, and attached to the back of the exhibit ticket. The declaration reads, "I declare that the whole of the work in this exhibit is original and was executed by me".
9. Novice Definition – Novice is a person new to an activity, a beginner – Entry must have been completed in the last twelve months prior to its entry in the show.
10. The committee shall exercise every care with the work submitted but will not be responsible for loss, any damage or breakage of any exhibit while in their custody nor for insurance of exhibits either in transit or while on exhibition.
11. In Children's section exhibitors shall not be over the age named in each class in which they intend to exhibit at date of closing of entries.
12. All schoolwork entries must have the name of the exhibitor and school clearly marked on entry form and back of the article.
13. All conditions will be strictly enforced.
14. No entries or prize money or vouchers will be available for collection prior to **Sunday 10<sup>TH</sup> September 2023.**
15. Exhibits and Prize money may be collected from Hammond Hall between the hours of **9.30am – 11.30 Sunday 10th September 2023.**

**ENTRY FEE \$1.00    Junior Section \$0.60**

**PRIZE MONEY FIRST \$5.00    SECOND \$ 3.00 (unless otherwise stated)**

**CHIEF STEWARD    MRS ANN JOHNSTON**

# WAGGA WAGGA SHOW 2023

## NEEDLEWORK – OPEN SECTION

ENTRY FEE \$1.00

PRIZE MONEY FIRST \$5.00 SECOND \$ 3.00 (unless otherwise stated)

1. **GARMENT FOR BABY OR CHILD.**
2. **MACHINE MADE GARMENT FOR ADULT.**
3. **HAUTE COUTURE GARMENT** – Hand Finished – Beading etc.
4. **TWO FROCK HANGERS** distinctly different designs – woven fabric.
5. **WALL HANGING** – not cross-stitched or canvas.
6. **DECORATED CUSHION COVER** - filled.
7. **NEEDLEWORK ARTICLE** – Christmas theme.
8. **BAG FASHION or CARRY** – made from fabric.
9. **CHRISTMAS QUILTING** – e.g., Wall hanging, Table Runner, Stocking.
10. **QUILT PATCHWORK** – Traditional or Contemporary – for the bed or wall no side to be greater than 240 cm.
11. **ITEM PATCHWORK – APPLIQUE** – No side to be greater than 120cm.
12. **DRESSED DOLL OR TEDDY** (Clothes only to be Judges).
13. **GADGET CASE – AN ELECTRONICS COZY** e.g., Phone Cozy, Kindle or Tablet cover, Laptop bag etc.
14. **ANY ITEM** – Not previously mentioned.
15. **NOVICE ITEM** – Any Needlework item (Definition – Novice is a person new to an activity, a beginner – Entry must have been completed in the last twelve months prior to its entry in the show)

### **SPECIAL AWARDS OPEN SECTION (Classes 1 – 15)**

#### **CHAMPION EXHIBIT OF NEEDLEWORK**

**\$10.00 Proudly Supported by C.W.A YATHELLA COURSING PARK BRANCH**

## **WAGGA WAGGA SHOW 2023**

**ENTRY FEE \$1.00**

**PRIZE MONEY FIRST \$5.00 SECOND \$ 3.00 (unless otherwise stated)**

16. **CROSS STITCH** – (Framed) stitched area to fit inside a 30cm square.
17. **CROSS STITCH** – (Framed) stitched area to fit inside a 50cm square.
18. **TAPESTRY** – (Framed) stitched area larger than a 50cm square.
19. **CROSS STITCH – Picture** mounted not framed.
20. **ARTICLE OF CANVAS WORK LONG STITCHED** – Framed or mounted.
21. **ARTICLE OF CANVAS or LINEN WORK** – using at least four (4) different stitches and / or mediums.
22. **ANY OTHER ARTICLE OF CROSS STITCH OR CANVAS WORK.**
23. **ARTICLE TAPESTRY.**
24. **SMALL HAND EMBROIDERED ITEM** – no larger than 30cm NOT a Picture or Wall Hanging.
25. **PIECE OF HAND EMBROIDERY FEATURING** –Ribbon, Wool or Beading.
26. **ITEM OF CANDLEWICK EMBROIDERY.**
27. **ITEM OF HARDANGER WORK.**
28. **SEWING ACCESSORY FEATURING** – Embroidery, pincushion, needle case etc.
29. **ITEM FEATURING APPLIQUE WORK** – Hand or Machine.
30. **ANY MACHINE EMBROIDERED ITEM.**
31. **ANY HAND EMBROIDERED ITEM NOT PREVIOUSLY MENTIONED** – Mixed Media Accepted.
32. **NOVICE SECTION** – Any Embroidery item

### **SPECIAL AWARDS OPEN SECTION (Classes 16 – 32)**

#### **CHAMPION EXHIBIT EMBROIDERY**

**\$25.00 proudly supported by EMBROIDERER'S GUILD OF NSW WAGGA WAGGA BRANCH**

#### **PIECE OF CROSS STITCH**

**\$20.00 Voucher Proudly Supported by RIVERINA FRAMING**

**\$20.00 Voucher Proudly Supported by WAGGA PICTURE FRAMES**

# WAGGA WAGGA SHOW 2023

## NEEDLEWORK - DISTRICT SECTION

**ENTRY FEE \$1.00**

**PRIZE MONEY FIRST \$5.00 SECOND \$ 3.00 (unless otherwise stated)**

33. **GARMENT FOR BABY OR CHILD**
34. **GARMENT FOR ADULT**
35. **HAUTE COUTURE GARMENT-** Hand finished beading, etc
36. **TWO FROCK HANGERS-** Distinctly different designs – Woven Fabric.
37. **BOOKMARK –** Any Medium.
38. **BAG FASHION OR CARRY –** Made from Fabric.
39. **NEEDLEWORK ITEM SUITABLE FOR CHRISTMAS.**
40. **QUILT, PATCHWORK –** Traditional or Contemporary – for the bed or wall no side to be greater than 240 cm.
41. **ARTICLE OF MACHINE PIECED AND MACHINE QUILTED PATCHWORK:** The exhibit is to be no more than one meter on any one side with minimal embellishments. The winning exhibit of this section may be eligible to compete in the Group Judging representing Wagga Wagga Show Society. Full rules available from Show Secretary.
42. **ITEM PATCHWORK – APPLIQUE –** No side to be greater than 120cm.
43. **TWO SMALL GIFT ARTICLES –**No larger than 30cm each.
44. **ANY NEEDLEWORK ITEM –**Not previously mentioned.
45. **NOVICE SECTION –** Any needlework item

**SPECIAL AWARDS – DISTRICT SECTION (Classes 33 – 45)**

**CHAMPION EXHIBIT NEEDLEWORK**

**\$10.00 Proudly Supported by C.W.A. WAGGA WAGGA EVENING BRANCH**

# WAGGA WAGGA SHOW 2023

## EMBROIDERY – DISTRICT SECTION

**ENTRY FEE \$1.00**

**PRIZE MONEY FIRST \$5.00 SECOND \$ 3.00 (unless otherwise stated)**

46. **CROSS STITCH** – Pictured (Framed) stitched area to fit inside a 30cm square.
47. **CROSS STITCH** – Pictured (Framed) stitched area larger than 30cm.
48. **CROSS STITCH** – Pictured – Mounted not framed.
49. **ARTICLE OF CANVAS WORK LONG STITCH** – (Framed or Mounted).
50. **ANY OTHER ARTICLE OF CROSS STITCH OR CANVAS WORK**
51. **TAPESTRY** – larger than 50cm
52. **SMALL EMBROIDERED ITEM** – No larger than 30cm (not a Picture or Wall Hanging).
53. **PIECE OF HAND EMBROIDERY FEATURING** – Ribbon, Wool or Beading.
54. **ANY EMBROIDERED ITEM NOT PREVIOUSLY MENTIONED** – Mixed Media Accepted.
55. **NOVICE SECTION** – Any Embroidery item

(Definition -Novice is a person new to an activity; a beginner.

Entry must have been completed in the last twelve months prior to its entry in the show.)

### **SPECIAL AWARDS DISTRICT SECTION (Classes 46 - 55)**

#### **CHAMPION EXHIBIT EMBROIDERY**

**\$25.00 Proudly Supported by EMBROIDERERS GUILD OF N.S.W –**

**WAGGA WAGGA BRANCH**

**PIECE OF CROSS STITCH**

**\$20.00 Voucher Proudly Supported by RIVERINA FRAMING**

#### **ITEM FROM EMBROIDERY SECTION**

**\$20.00 Voucher Proudly Supported by WAGGA PICTURE FRAMES**

## **WAGGA WAGGA SHOW 2023**

### **SENIOR CITIZENS OVER 70 YEARS OF AGE**

**ENTRY FEE \$1.00**

**PRIZE MONEY FIRST \$5.00 SECOND \$ 3.00 (unless otherwise stated)**

56. **ARTICLE OR GARMENT** – Hand or Machine made.
57. **SMALL EMBROIDERED ARTICLE**- No larger than 30cm including Frame (if framed).
58. **ARTICLE OF EMBROIDERY** – Worked Area Larger than 30cm.
59. **PATCHWORK GARMENT OR ARTICLE** – Hand or Machine Pieced.
60. **ANY NEEDLEWORK ITEM NOT REVIOUSLY MENTIONED**

### **SPECIAL AWARDS DISTRICT SECTION -SEIOR CITIZENS SECTIONS**

Classes 56-60 (Needlework) and 132-140 (Knitting)

### **CHAMPION EXHIBIT NEEDLEWORK/KNITTING/CROCHET**

**\$10 Proudly Supported by CWA Euberta Branch**

### **JUNIOR SECTION – NEEDLEWORK**

#### **GIRLS or BOYS**

**ENTRY FEE \$0.60**

**PRIZE MONEY FIRST \$4.00 SECOND \$ 2.00 (unless otherwise stated)**

### **18 YEARS and UNDER**

61. **ARTICLE OR GARMENT** – Hand or Machine Made.
62. **SMALL EMBROIDERED ARTICLE** – No larger than 30cm including Frame (if framed).
63. **ANY TYPE OF CRAFT WORK WITH A NEEDLE AND THREAD.**



## **WAGGA WAGGA SHOW 2023**

### **15 YEARS and UNDER**

- 64. **ARTICLE OR GARMENT** – Hand or Machine Made
- 65. **SMALL EMBROIDERED ARTICLE** – No larger than 30cm including Frame (if framed).
- 66. **ANY TYPE OF CRAFT WORK WITH A NEEDLE AND THREAD.**

### **12 YEARS and UNDER**

- 67. **GARMENT – ARTICLE – TOY** – Hand or Machine Made
- 68. **ARTICLE OF EMBROIDERY**
- 69. **ANY TYPE OF CRAFT WORK** – Done with Needle and Thread

### **10 YEARS and UNDER**

- 70. **GARMENT – ARTICLE – TOY** – Hand or Machine Made
- 71. **ANY TYPE OF CRAFT WORK** – Done with Needle and Thread

### **8 YEARS and UNDER**

- 72. **ARTICLE OF HAND SEWING**
- 73. **ANY TYPE OF CRAFTWORK** – Done with Needle and Thread
- 74. **ARTICLE NOT MENTIONED IN ANY AGE GROUP**
- 75. **NOVICE SECTION** – Any item of Needlework Junior Sections

(Definition -Novice is a person new to an activity; a beginner.

Entry must have been completed in the last twelve months prior to its entry in the show.)

## **WAGGA WAGGA SHOW 2023**

### **JUNIOR SECTION – KNITTING AND CROCHET GIRLS or BOYS**

#### **18 YEARS and UNDER**

76. ANY ITEM – Hand Knitted or Crochet.

#### **15 YEARS and UNDER**

77. ANY ITEM – Hand Knitted or Crochet.

#### **12 YEARS and UNDER**

78. ANY ITEM – Hand Knitted or Crochet.

#### **10 YEARS and UNDER**

79. ANY ITEM – Hand Knitted or Crochet.

#### **NOVICE SECTION**

80. ANY ITEM OF KNITTING OR CROCHET JUNIOR SECTIONS

**SPECIAL AWARD JUNIOR SECTIONS (Classes 61 – 80)**

**CHAMPION EXHIBIT OF NEEDLEWORK – KNITTING – CROCHET**

**\$10.00 Proudly Supported by C.W.A. EUBERTA BRANCH**

#### **HAND KNITTING AND CROCHET – OPEN SECTION**

## WAGGA WAGGA SHOW 2023

**ENTRY FEE** \$1.00

**PRIZE MONEY** FIRST \$5.00 SECOND \$ 3.00 (unless otherwise stated)

81. **BEDSPREAD or RUG** –Knitted or Crochet
82. **KNEE RUG** – Knitted or Crochet
83. **KNITTED GARMENT or ARTICLE** – Wool / Wool Blend – Label attached.
84. **KNITTED GARMENT or ARTICLE** - Acrylic, Label attached
85. **CROCHET GARMENT or ARTICLE** - Wool / Wool Blend – Label attached.
86. **CROCHET GARMENT or ARTICLE** - Acrylic, Label attached
87. **KNITTED GARMENT** – Lady's or Girl's
88. **KNITTED GARMENT** – Man's or Boy's
89. **KNITTED GARMENT**- To fit a child
90. **KNITTED SMALL ARTICLE** – Gloves, Socks, Hat, Cushion Cover, Bag
91. **DRESSED DOLL or TEDDY BEAR** –Knitted or Crochet (Clothes only judged).
92. **SOFT TOY – BEAR – DRESSED DOLL**- Suitable for a child –Knitted or Crochet.
93. **TWO FROCK HANGERS** –Knitted or Crochet – Different Patterns.
94. **TEA COSY** –Knitted or Crochet.
95. **TWO CROCHET EDGED HANKERCHIEFS**
96. **CROCHET DOILY – 20cm or Larger- Must Be** Mounted on thin Contrasting cardboard.
97. **THREE CO-ORDINATED TRADITIONAL BABY GARMENTS** –Knitted or Crochet
98. **BABY'S GARMENT or ARTICLE** –Knitted or Crochet – Other than Hat or bootees.
99. **TWO SMALL BABY ARTICLES** –Knitted or Crochet- different design (e.g. Bonnet, Bootees, Mittens, Socks).
100. **STOLE OR INFANT'S SHAWL** – Knitted or Crochet.
101. **BEANIE BONANZA** –Knitted or Crochet – Adult or Child's Beanie – Cap.
102. **SCARF** – Knitted or Crochet
103. **FIDDLE MAT, MUFF OR CUFF** – (Suitable embellishments) Crochet or Knit (Definition –

## **WAGGA WAGGA SHOW 2023**

These projects are designed to help calm the agitation and anxiety Alzheimer's and Dementia patients can suffer. These can give them something to do with their hands to keep them busy and warm).

- 104. ANY ITEM – Hand Knitted – not previously mentioned.**
- 105. ANY ITEM – Crochet – not previously mentioned.**
- 106. NOVICE SECTION – Any item of Knitting or Crochet Open Sections**

(Definition -Novice is a person new to an activity, a beginner.

Entry must have been completed in the last twelve months prior to its entry in the show.)

### **SPECIAL AWARD – OPEN SECTIONS (Classes 81 – 106)**

#### **CHAMPION EXHIBIT OF KNITTING or CROCHET**

**\$10.00 Proudly Supported by C.W.A. EUBERTA BRANCH**

### **HAND SPUN WOOL**

- 107. ARTICLE OR GARMENT FROM HAND SPUN WOOL – Hand Knitter or Crochet.**
- 108. HAND SPUN YARN 50MG HANK – State purpose; sample of fibres to be Attached.**
- 109. DESIGNER YARN 50MG HANK, may contain one (1) strand of commercial yarn:**  
(State purpose; sample of fibres to be attached).
- 110. NOVICE SPINNER 50MG HANK OF HAND SPUN YARN, State purpose; sample of Fibres to be attached.**
- 111. WEARABLE ARTICLE FEATURING HAND SPUN YARN; any technique or combination of same; sample of yarn to be attached.**
- 112. WOVEN ARTICLE; any fibre; sample of yarn to be attached.**
- 113. NOVICE ARTICLE 50% hand Spun; any technique; sample of yarn to be attached.**

## WAGGA WAGGA SHOW 2023

- 114. **FELTED ARTICLE;** sample of fibres to be attached.
- 115. **ANY OTHER ARTICLE;** sample of fibres and yarn to be attached.

### SPECIAL AWARD – HAND SPUN WOOL SECTIONS (Classes 107 – 115)

#### BEST OVERALL HAND SPUN AND KNITTED ARTICLE IN

#### HONOUR OF MRS OLIVE EDYVEAN

**\$25.00 DONATED BY WAGGA WAGGA HAND WEAVERS AND SPINNERS GUILD INC**

- 116. **WOOL ARTICLE / GARMENT STATE COMPETITION**

**TO BE ELIGIBLE FOR THIS AWARD THE WOOL LABEL MUST BE ATTACHED**

### CONDITIONS

1. **For the purpose of this competition the following definitions apply:**
  - a). **GARMENT:** an item that can be worn e.g., dress, jacket, scarf, hat
  - b). **ARTICLE:** a utility item that is not worn but can be used in the home e.g. blanket with an outfit e.g., bag: for amusement e.g., toy: as a decoration e.g. picture etc.
  - c). **THREE DIFFERENT TYPES:** the 3 items in an entry must differ from each other in terms of their construction technique and/or their purpose e.g., 1 a knitted jumper, blanket and tea cosy or e.g., 2 knitted tea cosies, a crochet tea cosy or a felted tea cosy OR e.g., 3 a knitted jumper, a knitted blanket and a crochet blanket.

## WAGGA WAGGA SHOW 2023

2. The **whole** article and /or garment must be constructed of, and contain a minimum of, **80% wool.**
3. Exhibits (articles/garments) may be knitted, crochet, sewn felted etc. and must be hand crafted (use of sewing machine is permitted).
4. **A sample of the yarn, fabric or fibre with label must be attached to each item making up the exhibit.** If a label is not available as a hand spun/felted, a handwritten label with relevant details and sample will suffice.
5. An exhibit in this competition may consist of the work of one individual or a group of individuals, or an organisation.
6. All three articles/garments must have been completed within 12 months prior to the local show and made by the exhibitor/s.
7. An exhibit having won at the local show may be exhibited (the same three articles/garments) at the Group Final. The winning exhibit at the Group Final is then eligible to compete in the State Final.
8. An exhibitor is only eligible to represent one Society at Group level and one Group at State level.
9. An exhibit (article/garment) that has previously competed at Group level is not eligible to compete again.
10. If this class is not scheduled or attracts no entries at the local show, the Chief Pavilion Steward in consultation with the appropriate Pavilion Section Judges, may select three suitable individual exhibits and, with the exhibitor's permission, enter them in a Group judging as an exhibit representing the particular Society concerned.
11. It is the responsibility of the Group Secretary and winner to co-ordinate the transfer of the winning entry to the ASC Office in Sydney for State judging.

## **WAGGA WAGGA SHOW 2023**

### **DISTRICT SECTION**

**ENTRY FEE \$1.00**

**PRIZE MONEY** FIRST \$5.00 SECOND \$ 3.00 (unless otherwise stated)

- 117. **AFGHAN RUG** –Knitted or Crochet
- 118. **KNEE RUG** –Knitted or Crochet
- 119. **PIECE OF CROCHET WORK** – in Wool or Synthetic Yarn
- 120. **SMALL ARTICLE –Knitted or Crochet** – (e.g., Gloves, Socks, Hat, Tea Cosy).
- 121. **CHILD’S GARMENT** – To fit from Birth to Two (2) years of age.
- 122. **KNITTED GARMENT** – Lady’s or Girl’s.
- 123. **KNITTED GARMENT** – Man’s or Boy’s.
- 124. **THREE OR MORE CO-ORDINATED TRADITIONAL BABY GARMENTS** – Hand Knitted or Crochet.
- 125. **BABY’S KNITTED DRESS, JACKET OR LEGGINS.**
- 126. **BABY’S KNITTED OR CROCHET BOOTEES**, two pair’s different patterns.
- 127. **TWO FROCK HANGERS** – Knitted or Crochet different patterns.
- 128. **SOFT TOY** – Knitted or Crochet.
- 129. **ANY ITEM MADE BY CROCHET OR KNITTING** up of odds and ends (less than 100g yarn).
- 130. **ANY ARTICLE** – Hand Knitted or Crochet – not previously mentioned.
- 131. **NOVICE SECTION** – Any item of Knitting or Crochet Open Sections

**SPECIAL AWARD – DISTRICT SECTIONS (Classes 117 – 131)**

**CHAMPION EXHIBIT OF HAND KNITTING or CROCHET**

**\$10.00 Proudly Supported by C.W.A. WAGGA WAGGA EVENING BRANCH**

## **WAGGA WAGGA SHOW 2023**

### **SPECIAL AWARD**

**(Classes 81 – 131)**

**CHAMPION EXHIBIT OF WOOL – WOOL BLEND – KNITTING or CROCHET**

**To be eligible for this award the Wool Label must be attached**

**\$20.00 Proudly Supported by the C.W.A. WAGGA WAGGA BRANCH**

### **SENIOR CITIZEN OVER 70 YEARS OF AGE**

- 134. **SHAWL or KNEE RUG** – Knitted or Crochet.
- 135. **ANY GARMENT or ARTICLE** – Knitted.
- 136. **ANY GARMENT or ARTICLE** – Crochet.
- 137. **TWO HANDKERCHIEFS** – Crochet edge – Different Patterns.
- 138. **ARTICLE SUITABLE FOR A GIFT** – Knitted or Crochet.
- 139. **TWO FROCK HANGERS** – Knitted or Crochet.
- 140. **ANY ARTICLE** – Knitted or Crochet – not previously mentioned.

### **MACHINE KNITTING SECTION**

- 141. **ANY GARMENT** – Plain or Lace.
- 142. **ANY GARMENT** – Tuck slip or weave.
- 143. **ANY GARMENT** – Fairisle or intarsia.
- 144. **ANY GARMENT** – Garter carriage.
- 145. **ANY GARMENT** – Double bed.
- 146. **FASHION GARMENT**– Fashion Garment or Fashion Accessory. **Special Award - \$10.00**  
**Proudly Supported by Wagga Wagga Machine Knitters**
- 147. **ANY ARTICLE** of Machine Knitting.



## **WAGGA WAGGA SHOW 2023**

**148. NOVICE SECTION – Any Piece of Machine Knitting.**

**SPECIAL AWARD (Classes 141 - 148)**

**CHAMPION EXHIBIT OF MACHINE KNITTING**

**\$20.00 Proudly Supported by Wagga Wagga Machine Knitters Group**

### **SPECIAL SECTION FOR PEOPLE ATTENDING DAY CARE CENTRES OR HOSTELS**

- 149. ANY GARMENT or ARTICLE – Hand Knitted, Crochet or Needlework.**
- 150. RUG – Hand Knitted or Crochet.**
- 151. CUSHION – Hand Knitted, Crochet or Needlework.**
- 152. TAPESTRY or LONGSTITCH**
- 153. PIECE OF CROCHET.**
- 154. HANDICRAFT ITEM SUITABLE FOR A GIFT – Hand Knitted, Crochet or Needlework.**
- 155. ANY ITEM – Not Previously Mentioned.**
- 156. ARTICLE – Hand Knitted or Crochet.**
- 157. NEEDLECRAFT ARTICLE.**
- 158. SMALL ARTICLE – Suitable for a Gift.**
- 159. ANY ARTICLE – Not Previously Mentioned.**

### **SPECIAL SECTION**

**This class is only for people whose disability physically or intellectually challenges their performance to produce their exhibit.**

- 160. ANY ARTICLE – Made by an exhibitor with a disability**

# **WAGGA WAGGA SHOW 2023**

**MOST SUCESSFUL EXHIBITOR - \$10.00**

**NEEDLEWORK – OPEN SECTION**

**NEEDLEWORK – DISTRICT SECTION**

**KNITTING & CROCHET – OPEN SECTION**

**KNITTING & CROCHET – DISTRICT SECTION**

**MACHINE KNITTING SECTION**

**JUNIOR SECTIONS (Classes 102 – 106)**

**SENIOR CITIZENS – 70 & 80 YEARS OF AGE (Classes 56 – 60)**

**HANDSPUN AND HAND KNITTED (Classes 107 – 115)**

## **GRAND CHAMPION PRIZES**

**PIECE OF NEEDLEWORK (Classes 1 – 15 and 33 -45)**

**IN HONOUR OF MS EVA HAYES - \$25.00**

## WAGGA WAGGA SHOW 2023

SUPPORTED BY C.W.A WAGGA WAGGA EVENING BRANCH

PIECE OF EMBROIDERY (Classes 16 -32 and 46-55)

IN HONOUR OF MS EVA HAYES - \$25.00

SUPPORTED BY EMBROIDERER'S GUILD OF NSW

WAGGA WAGGA BRANCH

PIECE OF KNITTING OR CROCHET (Classes 81 – 106 and 117 -131)

IN HONOUR OF MRS S MEIKLEJOHN - \$25.00

DONATED BY HER FAMILY



**WAGGA WAGGA SHOW 2023**

**THE WAGGA WAGGA SHOW SOCIETY  
GRATEFULLY ACKNOWLEDGES THE FOLLOW-  
ING FOR THEIR DONATIONS PRIZE MONEY DO-  
NORS AND REQUESTS YOUR PATRONAGE TO  
THESE SUPPORTERS.**

**C.W.A. EUBERTA BRANCH**

**C.W.A. WAGGA WAGGA BRANCH**

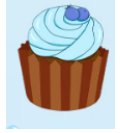
**C.W.A. WAGGA WAGGA EVENING BRANCH**

**C.W.A. YATHELLA COURSING PARK BRANCH**

**RIVERINA FRAMING**



# SECTION 18: FOOD AND COOKING



**Entries Close: Friday 1<sup>st</sup> September 2023**

**Chief Steward** Mrs Pam Bourne

**Entry Fee** \$1.00 per entry (including GST unless otherwise stated)

**Prize Money** First \$5.00 Second \$3.00 (unless otherwise stated)

## **CONDITIONS**

1. Stamped addressed envelope must accompany entry forms if you require your entry tickets returned.
2. Entries will only be accepted if accompanied by a stamped addressed envelope or the inclusion of \$1.40 to cover the return of entry tickets.
3. All exhibits in this section must be delivered to the showgrounds by **10.00am on Thursday 7<sup>th</sup> September 2023**.
4. Exhibitors please note that Stewards will be available to accept entries at Hammond Hall on **Wednesday 6th September 2023 between 3.00pm – 4.00pm. (All entries to be presented in oven bags)**.
5. Exhibits must be handed to Stewards and not placed in position by exhibitor.
6. Exhibitors entering in Sections 3, 14, 17 and 18 will have free entry after the first fifty (50) entries in total in each of these 4 Sections.
7. The use of any CAKE MIX is prohibited unless otherwise stated.
8. No cakes to be in ring tins, unless otherwise stated.
9. NO SALE OF ANY EXHIBIT IN THIS SECTION IS PERMITTED IN THE HALL.
10. Judging will commence at **10.30am on Thursday 7th September 2023**. All exhibitors must vacate the hall by this time.
11. Prize money or vouchers and exhibits may be collected from the Chief Steward Mrs Pam Bourne between the hours of **9.30 – 11.30 on Sunday 10th September 2023**.

## WAGGA WAGGA SHOW 2023

12. This will be strictly enforced.

13. NO RESPONSIBILITY WILL BE TAKEN FOR ENTRIES AFTER 11.30 ON SUNDAY 10th September 2023.

### 14. FREEZING POINTS

- a. All cakes are suitable for freezing. Make sure the cake has cooled thoroughly before freezing. Wrap tightly with cling wrap so there is no air between the cake and the wrapping. You can either put the cake in a dish or just wrap in paper to freeze.
- b. For Show work, ice after thawing. Thaw the day before the Show wrapped in a towel to absorb any moisture. Biscuits freeze well. Wrap Show biscuits in cello-paper. Put each pack into a plastic dish and freeze. To thaw, take dish out of freezer and leave in air tight container until ready to use.
- c. For Show work – never freeze sponge cakes, fruit cakes or shortbread. Fruit cakes and shortbread improve in flavour by keeping them out of the freezer. Scones can be frozen, but must be taken out the morning of the Show and wrapped in a tea towel.

**ENTRY FEE:** \$1.00 per entry (Inc GST)

1. **HANDMADE PLUM PUDDING** – made with butter and boiled in a cloth (suggested 250g butter, 250g sugar).

FIRST \$10.00 SECOND \$5.00

2. **PLUM PUDDING** – (STEAMED) cooked in basin not less than 1.35kg.

FIRST \$10.00 SECOND \$5.00

### **THE A.S.C OF N.S.W. RICH FRUIT CAKE COMPETITION**

3. The A.S.C. of NSW Rich Fruit Cake Competition. The recipe for this Section is COMPULSORY. Winners at Country Show will receive a Cash Prize of \$10.00 and will be required to back a second “Rich Fruit Cake “in order to compete in a semi-final to be conducted by each of the fourteen (14) Groups of the Agricultural

## **WAGGA WAGGA SHOW 2023**

Societies Council of NSW. The fourteen winners at Regional level will each receive a Cash Prize of \$15.00 and will be required to bake a third "Rich Fruit Cake" for the final judging at the Royal Easter Show where the winner will receive a Cash Prize of \$50.00.

**FIRST PLACE - \$45.00 Voucher donated by Wagga Wagga Show Society**

**SECOND PLACE - \$15.00 Voucher donated by Wagga Wagga Show Society**

**The following recipe is compulsory for all entrants and must be printed in all schedules.**

### **INGREDIENTS:**

250g (8 oz) sultanas 250 g (8 oz) chopped raisins 250 g (8 oz) currants 125 g (4 oz) chopped mixed peel 90 g (3oz) chopped red glace cherries 90 g (3 oz) chopped blanched almonds 1/3 cup sherry or brandy 250 g (8 oz) plain flour 60 g (2 oz) self-raising flour 1/4 teaspoon grated nutmeg 1/2 teaspoon ground ginger 1/2 teaspoon ground cloves 250g (8 oz) butter 250g (8 oz) soft brown sugar 1/2 teaspoon lemon essence OR finely grated lemon rind 1/2 teaspoon almond essence 1/2 teaspoon vanilla essence 4 large eggs.

### **RECOMMENDED METHOD:**

Mix together all the fruits and nuts and sprinkle with the sherry or brandy. Cover and leave for at least 1 hour, but preferably overnight. Sift together the flours and spices Cream together the butter and sugar with the essences. Add the eggs one at a time, beating well after, each addition, then alternately add the fruit and flour mixtures. Mix thoroughly. The mixture should be stiff enough to support a wooden spoon. Place the mixture into a prepared square 20cm x 20cm (8" x 8") tin and bake in a slow oven for approximately 3 1/2 - 4 hours. Allow the cake to cool in the tin.

Note: To ensure uniformity and depending upon the size it is suggested the raisins be snipped into 2 or 3 pieces, cherries into 4-6 pieces and almonds crosswise into 3-4 pieces.

Judge Note: The height of the cake should not exceed 5.7 cm (57mm).

4. **BOILED FRUIT CAKE** – not iced.
5. **SULTANA CAKE 250G** – mixture, lemon rind allowed (not iced).
6. **CHOCOLATE CAKE** – top iced only.

## **WAGGA WAGGA SHOW 2023**

7. **MARBLE CAKE** - plain pink icing – top only.
8. **RAINBOW CAKE** – three layers – 1 mixture into three- chocolate-pink-white- top iced only – mock cream filling. **FIRST \$10.00 SECOND \$ 5.00.**
9. **ORANGE CAKE** – top iced.
10. **CHOCOLATE ROLL** – mock cream filling.
11. **BANANA CAKE** – Lemon Icing
12. **CORNFLOUR SPONGE** – jam filled – not iced.
13. **APPLE CAKE** –to be iced.
14. **LAMINGTONS** – 4cm square.
15. **SIX CREAM PUFFS** – without filling.
16. **TEA CAKE**
17. **SIX APPLE & CINNAMON MUFFINS** – **FIRST \$3.00 SECOND \$1.50**
18. **SIX PLAIN SCONES** - **FIRST \$3.00 SECOND \$1.50**
19. **SIX SWEET SCONES** – (sultana or date) **FIRST \$3.00 SECOND \$1.50**
20. **SIX PUMPKIN SCONES** - **FIRST \$3.00 SECOND \$1.50.**
21. **SIX BISCUITS** – 3 varieties – not iced
22. **SIX PIECES OF COCONUT ICE** – made with Cophera – 5cm x 3cm.
23. **SIX ROCK CAKES** - **FIRST \$3.00 SECOND \$1.50.**
24. **SIX PIECES OF SLICE** – 3 varieties.

## **SENIOR SECTION**

25. **SULTANA CAKE** – for senior citizens 70 years and over.



## **WAGGA WAGGA SHOW 2023**

### **NOVICE SECTION**

**For those who have not previously won a First Prize in any Show**

**(Other than Junior Section)**

- 26. **BANANA CAKE** – lemon icing.
- 27. **SPONGE SANDWICH** – jam filled – not iced.
- 28. **SIX PLAIN SCONES** – FIRST \$3.00 SECONED \$1.50.
- 29. **APPLE & CINNAMON TEA CAKE**
- 30. **NOVELTY BUTTER CREAM CAKE**

### **BAKING FOR MEN**

- 31. **BUTTER CAKE** – variety iced – top only.
- 32. **SIX PLAIN SCONES**
- 33. **SIX PIKELETS**
- 34. **SIX MUFFINS** – any variety.
- 35. **SIX BISCUITS** – 3 varieties not iced.
- 36. **SIX ROCK CAKES**

### **SPECIAL PRIZES**

#### **CHAMPION PRIZES – BEST EXHIBIT – CLASSES 1 – 5**

**\$10.00 Voucher donated by WAGGA WAGGA SHOW SOCIETY PLUS RIBBON**

#### **CHAMPION PRIZES – BEST EXHIBIT – CLASSES 6 – 25**

**WAGGA WAGGA SHOW 2023**

**\$10.00 Voucher donated by WAGGA WAGGA SHOW SOCIETY PLUS RIBBON**

**MOST SUCCESSFUL EXHIBITOR**

**MOST SUCCESSFUL EXHIBITOR – CLASSES 1 – 25**

**\$20.00 Voucher donated by WAGGA WAGGA SHOW SOCIETY PLUS RIBBON**

**MOST SUCCESSFUL EXHIBITOR – CLASSES 26 – 30**

**\$10.00 Voucher donated by WAGGA WAGGA SHOW SOCIETY PLUS RIBBON**

**MOST SUCCESSFUL EXHIBITOR – CLASSES 31 - 36**

**\$10.00 Voucher donated by WAGGA WAGGA SHOW SOCIETY PLUS RIBBON**

**JUNIOR SECTION**

**18 YEARS AND UNDER**

**ENTRY FEE: Nil**

**PRIZE MONEY: FIRST \$4.00 SECOND \$2.00 (UNLESS OTHERWISE STATED)**

**37. DECORATED CAKE – (presented on board no larger than 36cm squared)**

**FIRST \$5.00 SECOND \$3.00**

**SPEEDWAY CAKE**

**COMPULSORY TO ALL ENTRANTS USE THIS RECEIPE**

**RECIPE**

## WAGGA WAGGA SHOW 2023

1 cup – 125G Butter  
1 cup – level Self Raising Flour  
3 TBS of Milk  
Pinch of Salt

$\frac{3}{4}$  cup Caster Sugar  
2 Eggs  
1 Orange – grated – rind only

(TBS - Tablespoon)

### METHOD

Mix all ingredients together and beat hard for 5 – 8 mins until light and creamy.  
Bake in ring tin for 30 mins in moderate oven.

38. **SPEEDWAY CAKE** – use recipe above.
39. **SPONGE SANDWICH** – jam filled – not iced.
40. **SIX LAMINGTONS** – butter mix – 4cm squared.
41. **SIX CUP CAKES** – iced – baked in patty tins.
42. **CHOCOLATE BUTTER CAKE**
43. **SIX PIKELET** – FIRST \$2.00 SECOND \$1.00
44. **SIX PLAIN SCONES** – FIRST \$2.00 SECOND \$1.00
45. **SIX PIECES OF SLICE** – 1 variety.
46. **SIX ANZAC BISCUITS**
47. **SIX COCONUT ICE** – made with Copha – pink and white – 5cm x 3cm.

### JUNIOR SECTION

#### 13 YEARS AND OVER 8 YEARS

ENTRY FEE: Nil

PRIZE MONEY: FIRST \$4.00 SECOND \$2.00 (UNLESS OTHERWISE STATED)

# WAGGA WAGGA SHOW 2023

## SPEEDWAY CAKE

### COMPULSORY TO ALL ENTRANTS USE THIS RECIPE

#### RECIPE

1 cup – 125G Butter  
1 cup – level Self Raising Flour  
3 TBS of Milk  
Pinch of Salt

$\frac{3}{4}$  cup Caster Sugar  
2 Eggs  
1 Orange – grated – rind only

(TBS - Tablespoon)

#### METHOD

Mix all ingredients together and beat hard for 5 – 8 mins until light and creamy.  
Bake in ring tin for 30 mins in moderate oven.

48. **SPEEDWAY CAKE** – use recipe above.
49. **SIX DECORATED CUP CAKES** – cooked in patty tins.
50. **SIX DECORATED MUFFINS** – cooked in patty tins.
51. **SIX SMALL CAKES** – not iced – baked in patty tins.
52. **SIX PLAIN SCONES** – FIRST \$2.00 SECOND \$1.00
53. **SIX COCONUT ICE** – made with Copha – pink and white – 5cm x 3cm.
54. **SIX ROCK CAKES**
55. **SIX ANZAC BISCUITS**
56. **SIX PIKELETS** – FIRST \$2.00 SECOND \$1.00
57. **EDIBLE NECKLACE** – anything edible – multi or single string on cotton or fishing line.

# **WAGGA WAGGA SHOW 2023**

## **JUNIOR SECTION**

### **8 YEARS AND OVER 5 YEARS**

- 58. SIX DECORATED ARROWROOT BISCUITS**
- 59. SIX CHOCOLATE CRACKLES**
- 60. SIX PATTY CAKES – quick mix – cooked in patty tins – not iced.**
- 61. EDIBLE NECKLACE – anything edible – multi or single strung on cotton or fishing line.**

## **JUNIOR SECTION**

### **UNDER 5 YEARS**

- 62. FOUR DECORATED ARROWROOT BISCUITS**
- 63. FOUR CHOCOLATE CRACKLES**
- 64. FOUR DECORATED CUP CAKES**
- 65. NOVELTY FIGURE MADE FROM BOUGHT SWEETS**

### **SPECIAL PRIZES**

### **SPECIAL VOUCHER PRIZES**

### **CHAMPION PRIZES – BEST EXHIBIT – CLASSES 37 – 65**

**\$10.00 Voucher donated by WAGGA WAGGA SHOW SOCIETY PLUS RIBBON**

### **MOST SUCCESSFUL EXHIBITOR**

### **MOST SUCCESSFUL EXHIBITOR – CLASSES 37 - 47**

## **WAGGA WAGGA SHOW 2023**

**\$10.00 Voucher donated by WAGGA WAGGA SHOW SOCIETY PLUS RIBBON**

### **MOST SUCCESSFUL EXHIBITOR – CLASSES 48 - 57**

**\$10.00 Voucher donated by WAGGA WAGGA SHOW SOCIETY PLUS RIBBON**

### **MOST SUCCESSFUL EXHIBITOR – CLASSES 58 - 61**

**\$10.00 Voucher donated by WAGGA WAGGA SHOW SOCIETY PLUS RIBBON**

### **MOST SUCCESSFUL EXHIBITOR – CLASSES 62 - 65**

**\$10.00 Voucher donated by WAGGA WAGGA SHOW SOCIETY PLUS RIBBON**

## **JAM AND PRESERVES**

### **CONDITIONS**

1. ALL FRUITS, JAM AND JELLIES TO BE EXHIBITED IN GLASS BOTTLES CONTAINING NO LESS THAN 250 G (1/2 LB).
2. JAMS AND JELLIES MUST HAVE SCREW CAPS THAT OPEN FREELY ON JUDGING DAY.
3. THESE CONDITIONS WILL BE STRICTLY ENFORCED.
4. IN COLLECTIONS – PRESENTED IN A BOX.

**ENTRY FEE: \$1.00 PER ENTRY (INC GST)**

**PRIZE MONEY: FIRST \$4.00 SECOND \$2.00 (UNLESS OTHERWISE STATED)**

### **ENTRIES IN CLASSES 66 – 86 ARE RESTRICTED TO 1 ENTRY IN EACH CLASS**

66. THREE VARIETIES OF PRESERVED FRUIT – FIRST \$5.00 SECOND \$3.00
67. JAR PEACH JAM
68. JAR JAM – made from any variety of Berry Fruit.
69. JAR SWEET ORANGE JAM
70. JAR GRAPEFRUIT MARMALADE
71. JAR SHREDDED MARMALADE
72. JAR GRAPE JAM

## **WAGGA WAGGA SHOW 2023**

- 73. **JAR LIGHT PLUM JAM**
- 74. **JAR DARK PLUM JAM**
- 75. **JAR QUINCE Jam**
- 76. **JAR FIG JAM**
- 77. **JAR APRICOT JAM**
- 78. **JAR TOMATO JAM**
- 79. **JAR MELON JAM – any flavour.**
- 80. **JAR OF JAM – any other variety.**
- 81. **JAR APPLE JELLY**
- 82. **JAR QUINCE JELLY**
- 83. **JAR LEMON BUTTER**

### **COLLECTIONS**

- 84. **COLLECTION OF JAMS – 4 varieties – not citrus – to be presented in shallow box**  
**FIRST \$10.00 SECOND \$5.00 (VOUCHERS)**
- 85. **COLLECTION OF JAM AND MARMALADES – 4 varieties - made from citrus fruits – to be presented in shallow box – FIRST \$10.00 SECOND \$5.00 (VOUCHERS)**
- 86. **DECORATED GIFT BASKET OF JAMS AND PRESERVES – FIRST \$10.00 SECOND \$5.00 (VOUCHERS)**

### **SPECIAL PRIZES**

#### **CHAMPION PRIZES – BEST EXHIBIT – CLASSES 66 - 86**

**\$10.00 Voucher donated by WAGGA WAGGA SHOW SOCIETY PLUS RIBBON**

#### **MOST SUCCESSFUL EXHIBITOR**

#### **MOST SUCCESSFUL EXHIBITOR – CLASSES 66 - 86**

**\$20.00 Voucher donated by WAGGA WAGGA SHOW SOCIETY PLUS RIBBON**

## WAGGA WAGGA SHOW 2023

### PICKLES AND SAUCES

**ENTRY FEE:** \$1.00 PER ENTRY (Inc GST)

**PRIZE MONEY:** FIRST \$3.00 SECOND \$2.00 (UNLESS OTHERWISE STATED)

**ENTRIES IN CLASSES 87 – 94 ARE RESTRICTED TO 1 ENTRY IN EACH CLASS**

- 87. BOTTLE GREEN TOMATO PICKLES
- 88. BOTTLE MUSTARD PICKLES
- 89. BOTTLE TOMATO SAUCE
- 90. BOTTLE PLUM SAUCE
- 91. BOTTLE TOMATO RELISH
- 92. BOTTLE OF CORN RELISH
- 93. JAR OR OTHER VARIETY OF PICKLES OR CHUTNEY
- 94. DECORATE GIFT BASKET OF PICKLES OR SAUCES – FIRST \$10.00 SECOND \$5.00 (VOUCHERS)

### SPECIAL PRIZES

**CHAMPION PRIZES – BEST EXHIBIT – CLASSES 87- 94**

\$20.00 Voucher donated by WAGGA WAGGA SHOW SOCIETY PLUS RIBBON

**MOST SUCCESSFUL EXHIBITOR**

**MOST SUCCESSFUL EXHIBITOR – CLASSES 87 - 94**

\$20.00 Voucher donated by WAGGA WAGGA SHOW SOCIETY PLUS RIBBON

*TROPHIES & RIBBONS DONATED BY*

**WAGGA SHOW SOCIETY**





WAGGA WAGGA SHOW 2023

**SECTION 19: BOER GOATS**



**Entries Close: Friday 1<sup>st</sup> September 2023**

**ENTRY FEE \$5.00**

**PRIZE MONEY FIRST \$5.00 SECOND \$2.00 THIRD RIBBON (Unless otherwise stated)**

**CHIEF STEWARD TBC**

**JUDGE: Geoff Mitchell**

**JOHNE'S DECLARATION MUST ACCOMPANY ENTRIES**

**DEFINITELY NO LATE ENTRIES DUE TO PEN ALLOCATIONS**

**CHEQUES MADE PAYABLE TO WAGGA WAGGA SHOW SOCIETY**

**JOHNE'S DECLARATION**

1. A signed declaration by the district Veterinary Officer that animals being shown came from a property that has been Johne's free for a period of five (5) years.
2. The exhibitor to sign the Health Declaration that to their knowledge the animals have not been in contact with any stock which have originated from a property which is known to have been affected with Johne's Disease.
3. Declaration must be submitted by the closing date of entries. Calculation of age from judging day.
4. Exhibitors are to provide their own handlers for their exhibits during judging. Goats are to be penned prior to judging which is scheduled to commence at 9.00am on Saturday 10th September 2022.
5. In all classes, the Steward has the authority to remove an animal from one Section to another if he considers it would be more suitable.
6. All handle's in classes 1 – 14 must be over 12 years of age.

**Download Johne's Declaration form [www.agshowsw.org.au](http://www.agshowsw.org.au)**

**NOTE: WHITE COATS TO BE WORN ON THE DAY**

**Note: All owners of Boer Goats Exhibits are to ensure that your Registration and NLIS Tag are up to date and displayed.**

# WAGGA WAGGA SHOW 2023

## STUD SECTION

SATURDAY 9th September 2023

Judging will commence at 9.00am Sharp

**NOTE:** Age is calculated as of the 9th September 2023

### DOE CLASSES

1. Junior full Blood Doe 4 months and under 12 months(standard)
2. Junior full Blood Doe under 4 months and under12 months (Full colour)
3. Junior champion standard Boer goat
4. Junior champion solid colour Boer goat
5. Full Blood Does 12-18 months (standard)
6. Full Blood Does 12-18 months (Full colour)
7. Full Blood Doe 18-24 Months (Standard)
8. Full Blood Doe 18-24 Months (full colour)
9. Intermediate champion standard Boer goat
10. Intermediate champion full colour Boer goat
11. Full Blood Doe 24-36 Months (standard)
12. Full Blood Doe 24-36 Months (full colour)
13. Full Blood Doe 36-48 Months (standard)
14. Full Blood Doe 36-48 Months (full colour)
15. Full blood doe 48 months and older (Standard)
16. Full blood doe 48 months and older (Standard)
17. Senior champion standard Boer goat
18. Senior champion Full colour Boer goat
19. Grand champion Boer goat

### BUCK CLASSES

20. Junior full Blood buck 4 months and under 12 months(standard)
21. Junior full Blood buck under 4 months and under12 months (Full colour)
22. Junior champion standard Boar goat
23. Junior champion solid colour Boer goat
24. Full Blood buck 12-18 months (standard)
25. Full Blood buck 12-18 months (Full colour)
26. Full Blood buck 18-24 Months (Standard)
27. Full Blood buck 18-24 Months (full colour)
28. Intermediate champion standard Boer goat
29. Intermediate champion full colour Boer goat
30. Full Blood buck 24-36 Months and over (standard)
31. Full Blood buck 24-36 Months and over (full colour)
32. Senior champion standard Boer goat

## WAGGA WAGGA SHOW 2023

33. Senior champion Full colour Boer goat
34. Grand champion Boer goat

### GROUP CLASSES

Sires progeny consisting of a group of 3 Boer goats of the one breed any age by the same sire

Dams and 1 progeny any age selected from general class

Dams and 2 progeny any sex selected from general class

CHRISTINE DOLEMAN MEMORIAL PERPETUAL TROPHY

MOST SUCCESSFUL EXHIBITOR

*TROPHIES & RIBBONS DONATED BY*

**WAGGA SHOW SOCIETY**











# WAGGA WAGGA SHOW 2023

## EXHIBITOR'S ENTRY FORM



**WAGGA WAGGA SHOW SOCIETY**  
 P.O. BOX 7256  
 MT AUSTIN  
 NSW 2650  
 PHONE: 0427 252 180  
 EMAIL: [admin@waggashow.com.au](mailto:admin@waggashow.com.au)

NAME: \_\_\_\_\_

ADDRESS: \_\_\_\_\_

PHONE: \_\_\_\_\_ EMAIL: \_\_\_\_\_

SECTION: \_\_\_\_\_

ENTRY TICKETS WILL BE      MAILED OR      COLLECT      (PLEASE CIRCLE)

CLASS	NAME OF SCHEDULE EXHIBITS	ENTRY
	Stamped addressed envelope or \$1.50	1.40

**TOTAL**

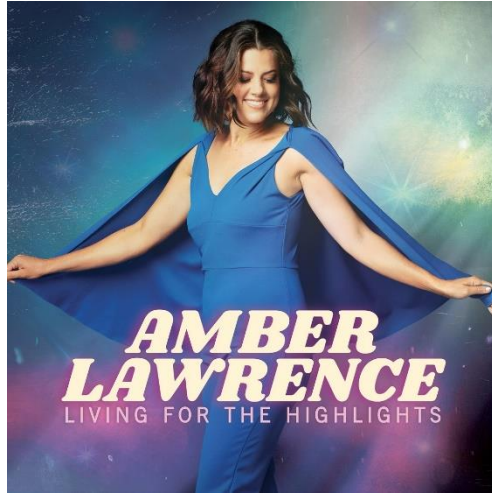
Please receive the above entries, which I agree to make subject to the rules and regulations of the Wagga Wagga Show Society. All entries must be accompanied by a large self-address envelope and be stamped to have your entry tickets sent back to you.

Signed \_\_\_\_\_



WAGGA WAGGA SHOW 2023

PERFORMING AT THE WAGGA SHOW FRIDAY 8<sup>TH</sup>  
SEPTEMBER 2023



PERFORMING AT THE WAGGA SHOW SATURDAY  
9<sup>TH</sup> SEPTEMBER 2023



**LACHIE GILL**

[Spotify](#) [Facebook](#) [Instagram](#) [TikTok](#) [YouTube](#)

It was in 2022 that the music world received their introduction to Lachie Gill when he became a household name as winner of The Voice. Gifted with an arresting, mesmerising vocal ability, and an air of captivating natural charisma, Lachie impressed the music-lovers of Australia enough to take out the long-running show's fifth season under the guidance of Rita Ora.

A music fan from a young age, Lachie was only 13 when he first began his musical journey, being gifted a ukulele from his grandfather, and soon embracing performances while at school. Falling in love with emotional acoustic compositions, names like Ed Sheeran, Lewis Capaldi, and Dermot Kennedy soon began to influence his sound, and by 18, he was performing around coastal Victoria, juggling his passions between time spent playing AFL and studying to be a PE teacher.

Emerging from the victory of The Voice with the acclaimed single 'Wasted Time', Lachie teamed up with prolific producers Andy and Thom Mak in Avoca Beach to write for his next project. Harnessing his candid, emotive writing style, Lachie and the Mak brothers broke down these walls of vulnerability to craft the anthemic 'Sad Summer' which was added nationally to pop radio over Summer 2022/23, as well as the moving ballad 'Right People Wrong Time' featuring singer-songwriter Elaskia.

# WAGGA WAGGA SHOW 2023

